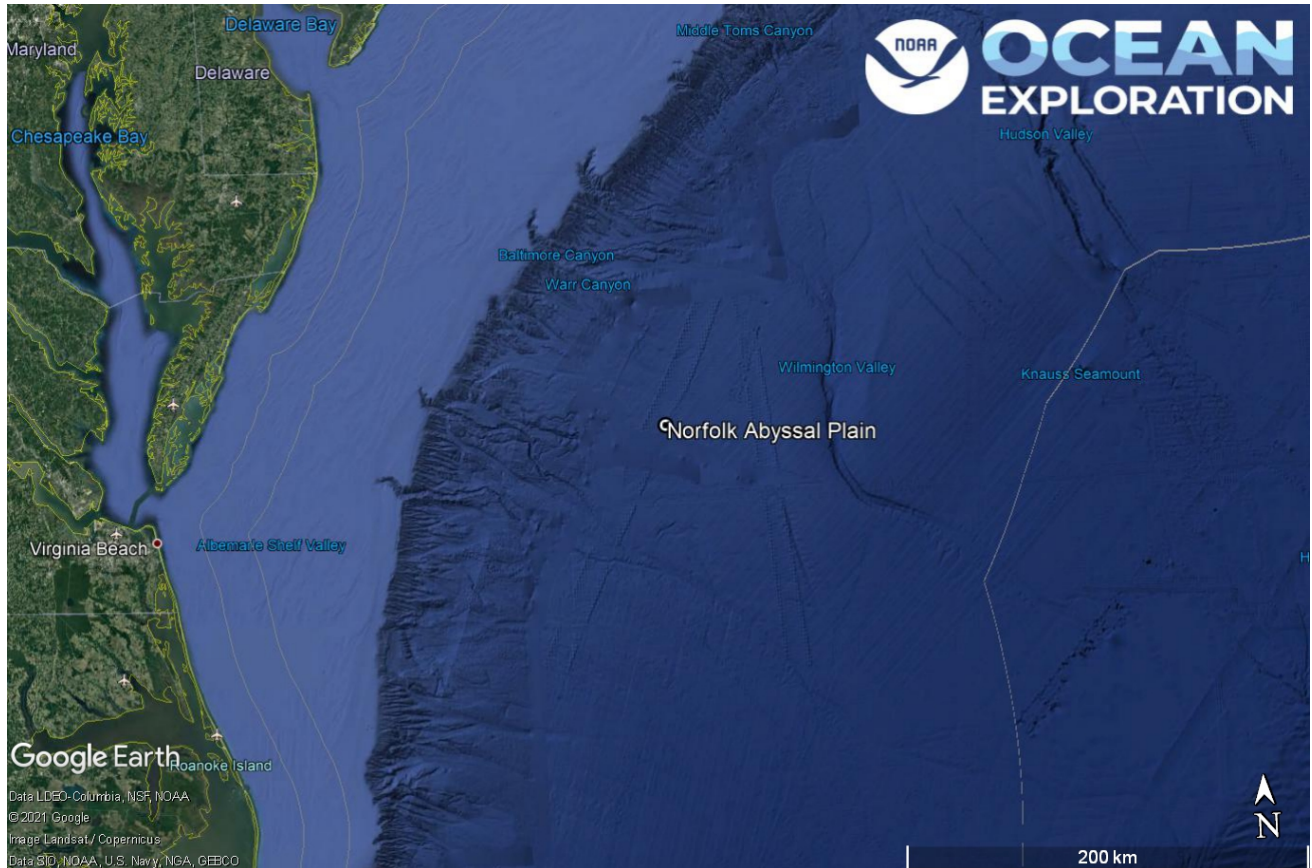


ROV Dive Summary, EX-21-03, Dive 04, June 17, 2021

General Location Map



Dive 04 named Norfolk Abyssal Plain off of the Virginia continental shelf.

Dive Information

Site Name	Norfolk Abyssal Plain
General Area Descriptor	US Mid-Atlantic, Abyssal Plain
Science Team Leads	Karl McLetchie
Expedition Coordinator	Kasey Cantwell/Matt Dornback
ROV Dive Supervisor	Karl McLetchie
Mapping Lead	Shannon Hoy

Notable Observations	
Community and habitat observations	Corals and Sponges - Present Chemosynthetic Community - Absent High biodiversity Community - Absent Active Seep or Vent - Absent Extinct Seep or Vent - Absent Hydrates - Absent
CMECS Feature Type(s)	Flat
SeaTube Link (science annotation system)	https://data.oceannetworks.ca/SeaTubeV3?resourceTypeId=600&resourceId=2173

Equipment Deployed

ROV	<i>Deep Discoverer</i>
Camera Platform	<i>Seirios</i>
ROV Measurements	The following ROV measurements, data streams and equipment are used on each ROV deployment: CTD, depth, scanning sonar, USBL position, altitude, heading, attitude, high-resolution cameras, low resolution cameras, manipulator arms, suction sampler, sample drawers and thrusters. The section below notes if any of these sensors were malfunctioning or not operational
Equipment Malfunctions	

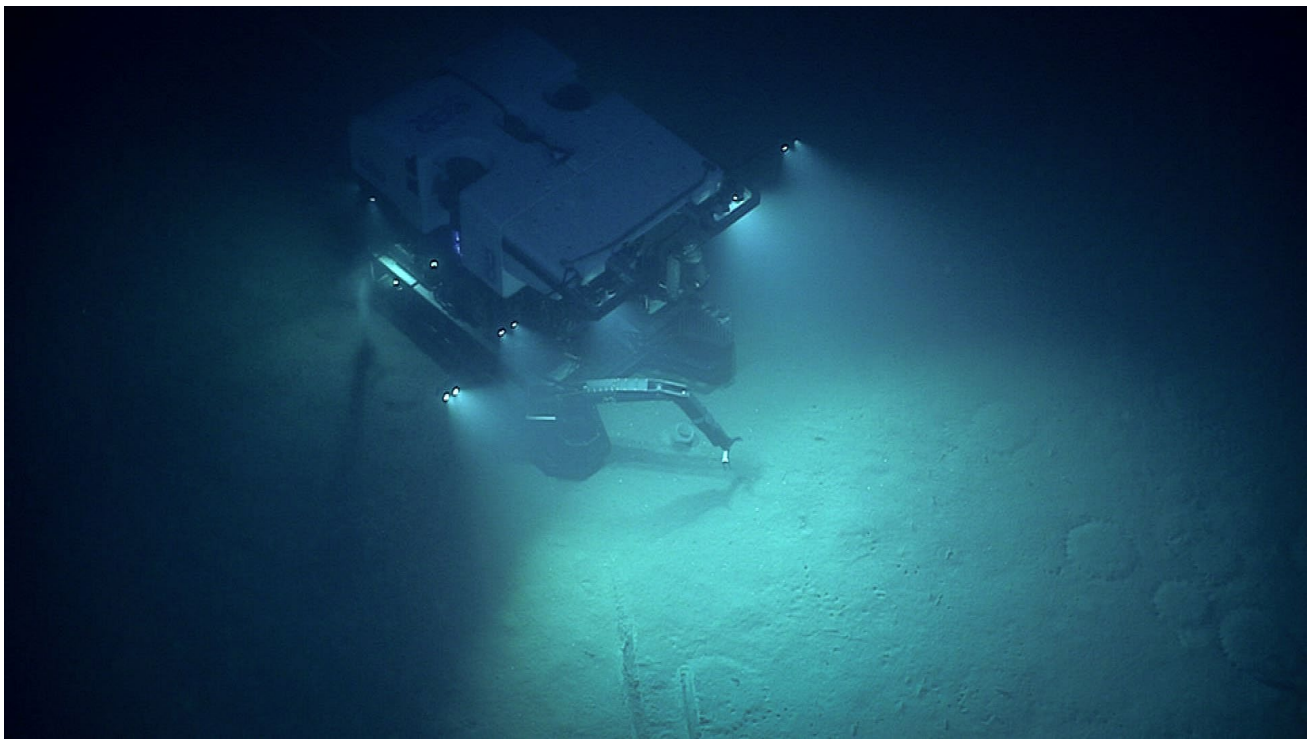
Close-up Map of Main Dive Site

None available

Representative Photos of the Dive



A holothurian filtering through sediment on the seafloor.



ROV *D2* practicing with the manipulator arm.

Samples Collected -

No samples were collected

