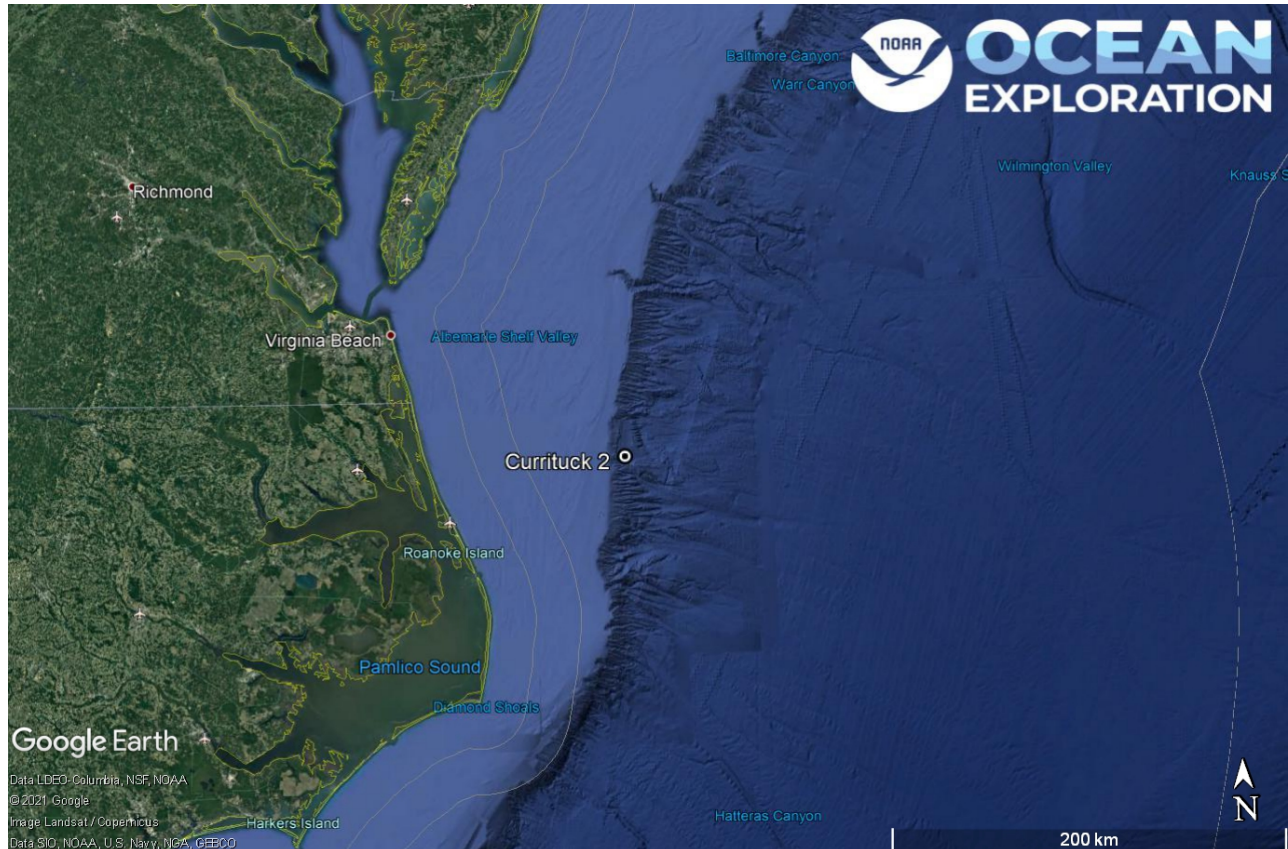


ROV Dive Summary, EX-21-03, Dive 02, June 16, 2021

General Location Map



Dive 02 named Currituck 2 on the shelf off of the North Carolina coast.

Dive Information

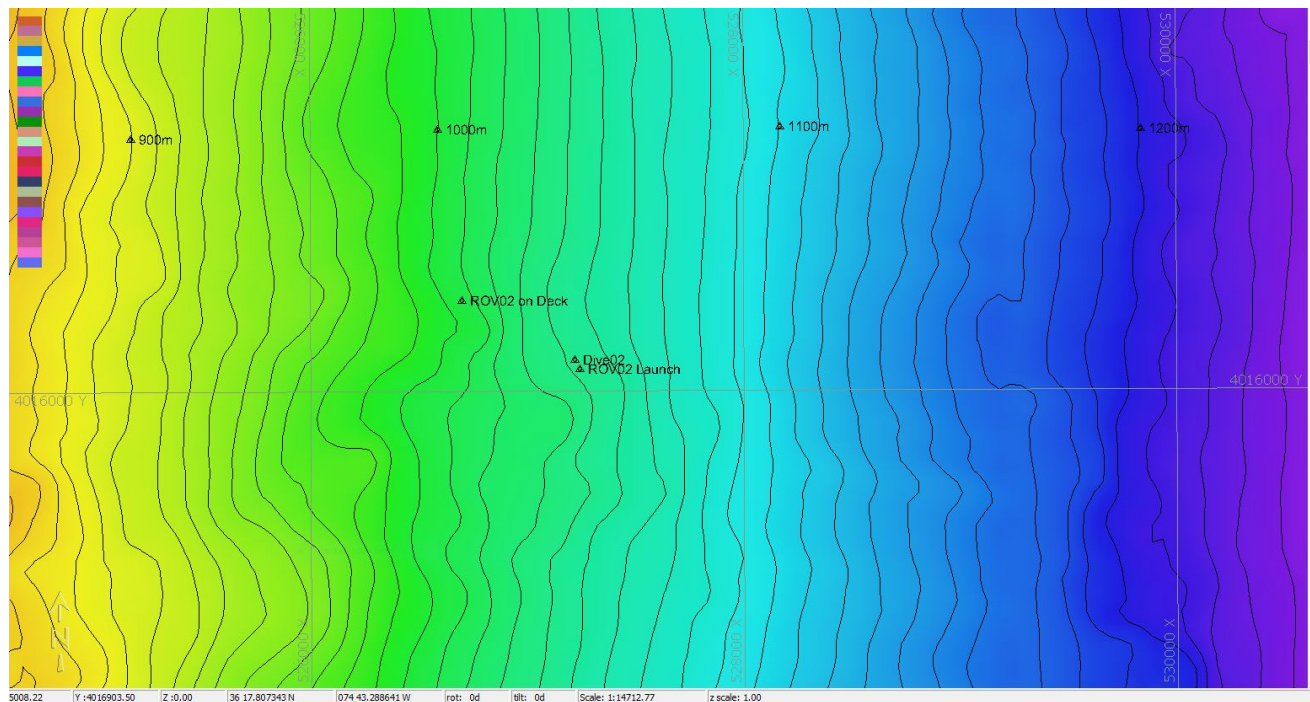
| | |
|----------------------------|---|
| Site Name | Currituck 2 |
| General Area Descriptor | US Mid-Atlantic, Currituck Landslide |
| Science Team Leads | Karl McLetchie |
| Expedition Coordinator | Kasey Cantwell/Matt Dornback |
| ROV Dive Supervisor | Karl McLetchie |
| Mapping Lead | Shannon Hoy |
| Dive Purpose | The second engineering dive of the ROV Shakedown. Primary objectives include testing new motors, motor controllers, lights, cameras, and hydraulic systems on the ROVs. |

| | |
|--|--|
| Community and habitat observations | Corals and Sponges - Absent Chemosynthetic Community - Absent High biodiversity Community - Absent Active Seep or Vent - Absent Extinct Seep or Vent - Absent Hydrates - Absent |
| CMECS Feature Type(s) | Flat, Submarine Slide Deposit |
| SeaTube Link (science annotation system) | https://data.oceannetworks.ca/SeaTubeV3?resourceTypeId=600&resourceId=2153 |

Equipment Deployed

| | |
|------------------------|--|
| ROV | <i>Deep Discoverer</i> |
| Camera Platform | <i>Seirios</i> |
| ROV Measurements | The following ROV measurements, data streams and equipment are used on each ROV deployment: CTD, depth, scanning sonar, USBL position, altitude, heading, attitude, high-resolution cameras, low resolution cameras, manipulator arms, suction sampler, sample drawers and thrusters. The section below notes if any of these sensors were malfunctioning or not operational |
| Equipment Malfunctions | Turbidity Sensor |

Close-up Map of Main Dive Site



Hypack map of the Dive 02 waypoints. Depth is displayed by contour lines at 10 meter increments and by colors. Warm colors are shallower and cool colors are deeper.

Representative Photos of the Dive



A shark swimming in the water column during deployment.

Samples Collected -

No samples were collected

Niskin Sampling Summary

No Niskin bottles were used

Scientists Involved (provide name, email, affiliation)

| Name | Email | Affiliation |
|---------------|-------------------|-------------|
| Jason Chaytor | jchaytor@usgs.gov | USGS |
| | | |
| | | |
| | | |
| | | |
| | | |
| | | |
| | | |
| | | |
| | | |
| | | |
| | | |
| | | |
| | | |
| | | |
| | | |
| | | |
| | | |
| | | |
| | | |
| | | |

Please direct inquiries to:

NOAA Office of Ocean Exploration & Research
1315 East-West Highway, SSMC3 RM 10210
Silver Spring, MD 20910
oceanexplorer@noaa.gov

