



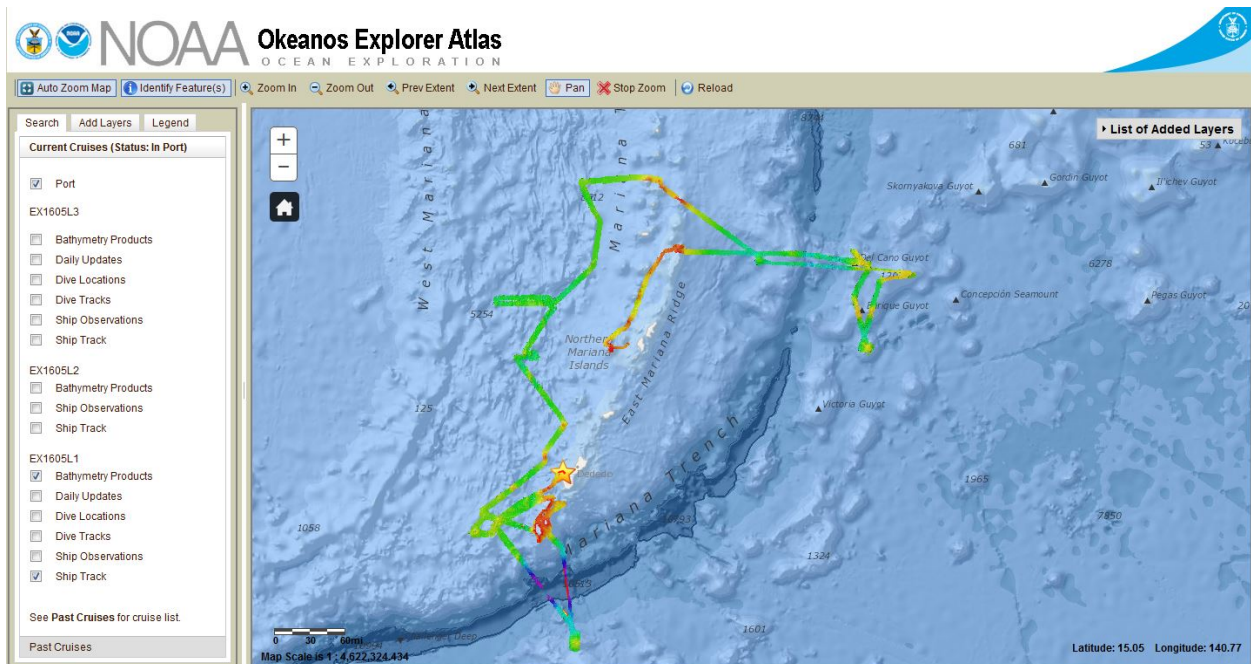
## OER Data Management Team Mission Report EX1606 (July 27 – Aug 19, 2016)

The EX1606 [Project Instructions](#) described the following objectives, which were mostly met.

- *EX1606 operations will cover a wide area of the US EEZ in and around Wake Island and along the transits from Guam and to Kwajalein. The primary goal for this cruise is to collect baseline data and information to support priority NOAA science and management needs.*

EX1606 began with a myriad of technical challenges but a collaborative effort by the ship's crew and the mission personnel, most of the problems were fixed before the first dive. Midway into the cruise, the SRS1 system at URI crashed and would not restart, making the ftp site and the event log unavailable for the dive. With help from shoreside personnel, the SRS2 was brought up as a backup to SRS1 and worked for the remainder of the mission.

The [mission ISO metadata record](#) has been updated to reflect the cruise has taken place.



Data Throughput

Project Instructions Received	Data Management Plan Delivered	ISO Collection Level Metadata Published	Cruise End	Data Received	Final Data Archive Complete	Cruise End to Archive
7/25/2016	7/12/2016	9/23/2016	8/19/2016	9/20/2016	10/4/16	46 days

Data and Information Access

Oceanographic Archive	Geophysical Archive	Library Catalog	Total Archived Volume
<a href="#">7219 files (10.2 GB)</a>	<a href="#">3826 files (156 GB)</a>	18 files (.02 GB)	166.22 GB