



OER DATA MANAGEMENT TEAM

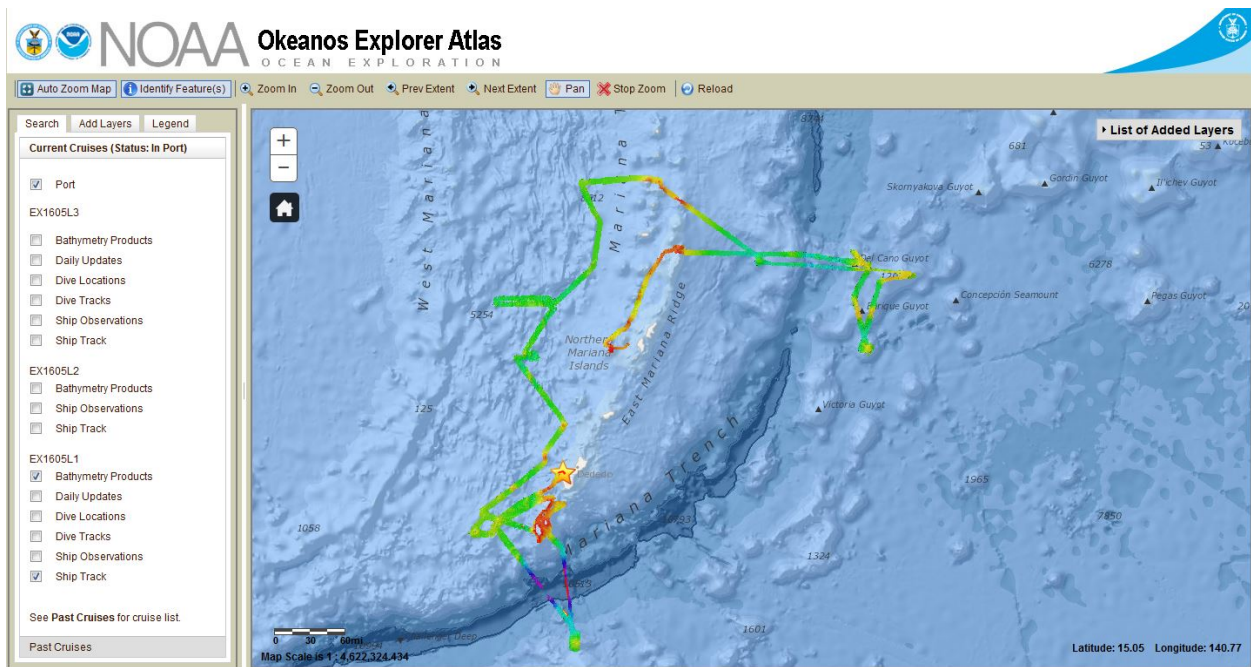
## OER Data Management Team Mission Report EX1605L2 (May 20 – June 11, 2016)

The EX1605L2 [Project Instructions](#) described the following objectives, which were mostly met.

- *EX1605L2 operations will be focused entirely within the US EEZ near the northern boundary of the Commonwealth of the Northern Mariana Islands, and primarily within Trench and Islands Units of the Mariana Trench Marine National Monument. The primary goal for this cruise is to collect baseline data and information to support priority NOAA science and management needs.*

No data issues to report.

The [mission ISO metadata record](#) has been updated to reflect the cruise has taken place.



Data Throughput

Project Instructions Received	Data Management Plan Delivered	ISO Collection Level Metadata Published	Cruise End	Data Received	Final Data Archive Complete	Cruise End to Archive
4/13/2016	4/29/2016	7/21/2016	6/11/2016	7/19/2016	8/16/16	65 days

Data and Information Access

Oceanographic Archive	Geophysical Archive	Library Catalog	Total Archived Volume
<a href="#">271 files (3.78 GB)</a>	<a href="#">3375 files (124 GB)</a>	5 files (.018 GB)	127.8 GB