



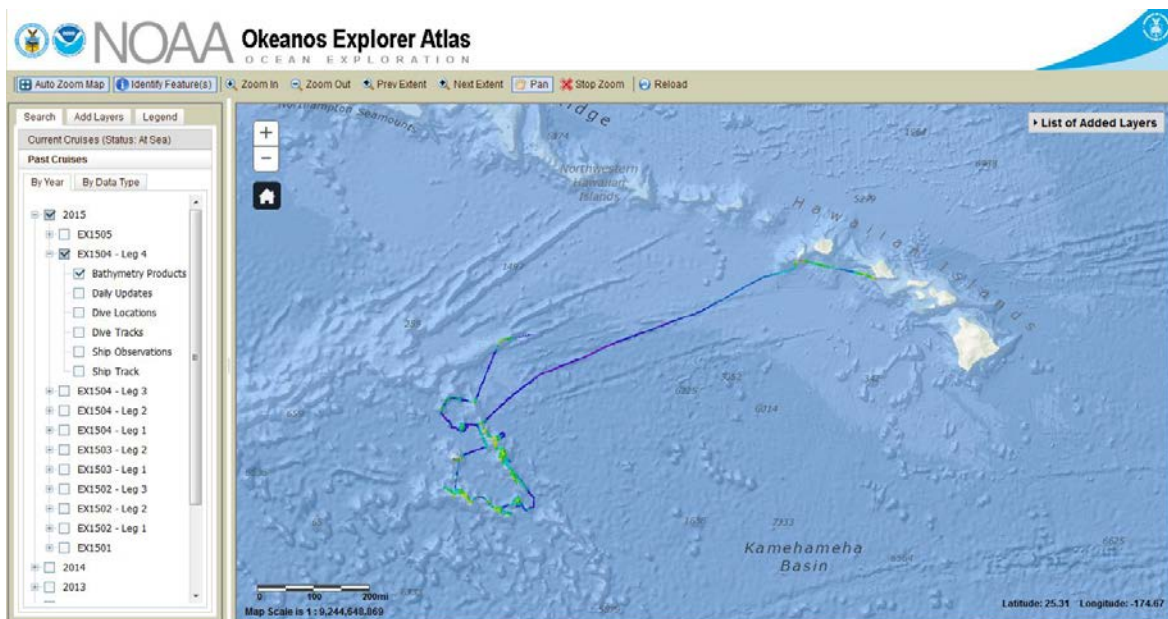
## OER Data Management Team Mission Report EX1602 (Feb 12 – Feb 17, 2016)

The EX1602 [Data Management Plan](#) described the following objectives, which were mostly met.

- *Integrate new systems into data management pipelines*
- *test deck-to-deck telestream video recording system*
- *train onboard sampling operations assistant to use EX SODA*
- *protect data from marine archaeology dive, if underwater cultural heritage is located*
- *confirm that the new video compression routines (naming, consolidation, push, etc) are working on the new VES stations*
- *verify that the recalibrated ROV environmental sensors are accurate*
- *compare CTD systems and compare vertical profiles from recovery to a ship CTD cast*
- *ensure that ROV navigation is being captured*
- *verify that all cameras on the submersibles have been added to the camera list*
- *add camera angle nmea string transmission to SCS feed.*

No data issues to report.

The [mission ISO metadata record](#) has been updated to reflect the cruise has taken place.



### Data Throughput

Project Instructions Received	Data Management Plan Delivered	ISO Collection Level Metadata Published	Cruise End	Data Received	Final Data Archive Complete	Cruise End to Archive
2/4/2016	1/27/2016	3/10/2016	2/17/2016	3/4/2016	06/6/16	110 days

### Data and Information Access

Oceanographic Archive	Geophysical Archive	Library Catalog	Total Archived Volume
<a href="#">562 files (.96 GB)</a>	<a href="#">1880 files (15.6 GB)</a>	<a href="#">5 files (.003 GB)</a>	16.56 GB