

## OER DATA MANAGEMENT TEAM

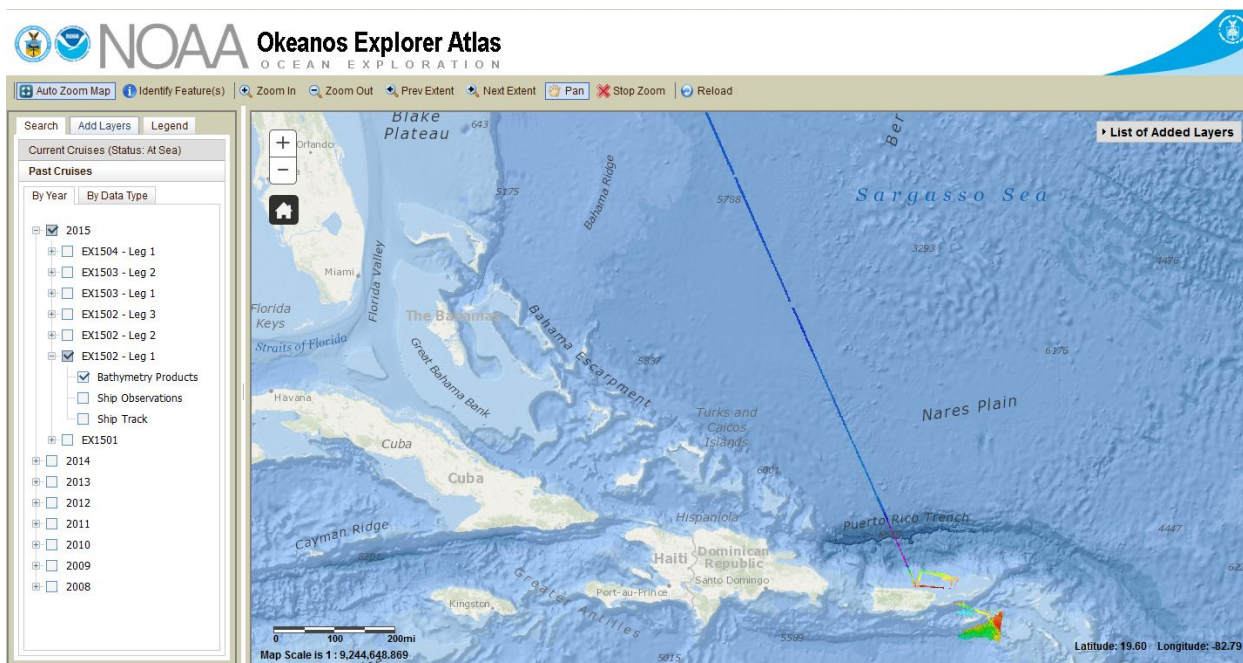
# OER Data Management Team Mission Report EX1502L1 (Feb 23 – Mar 11, 2015)

The EX1502L1 [Data Management Plan](#) described the following objectives, which were mostly met.

- *Ensure consolidation of standard sensor and mapping products;*
- *ensure ship to shore data synchronization between shipboard and shoreside repositories;*
- *ensure generation and shoreside display of dashboard datasets.*

Data management went as planned during this mission.

The [mission ISO metadata record](#) has been updated to reflect the cruise has taken place.



Data Throughput

Project Instructions Received	Data Management Plan Delivered	ISO Collection Level Metadata Published	Cruise End	Data Received	Final Data Archive Complete	Cruise End to Archive
2/3/2015	2/5/2015	3/10/2015	3/11/2015	4/10/2015	6/2/2015	83 days

Data and Information Access

Oceanographic Archive	Geophysical Archive	Library Catalog	Total Archived Volume
<a href="#">1334 files (4.5 GB)</a>	<a href="#">3135 files (127.7 GB)</a>	<a href="#">2 files (2.68 MB)</a>	132.2 GB