

EX1102 ROV SHAKEDOWN: April 19-28, 2011

NOAA Ship *Okeanos Explorer*

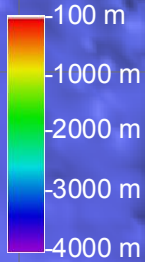


On EX1101, the Ship and Mapping systems were tested and calibrated after the winter shipyard. Small surveys were conducted off the coast of California to test the multibeam in varying terrain and depths to collect data for ROV targets for EX1102. These targets were utilized for ROV engineering dives to integrate Seirios (the new camera platform) with the ROV in preparation for the 2011 season.



Legend

- CTD Cast
- ROV Dive

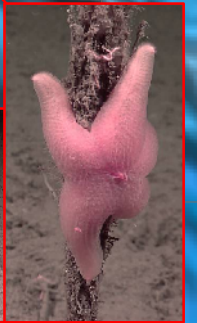


Cruise Statistics

CTD Casts.....2

ROV Dives.....7

Line km Mapped.....4747 km



34°30'0"N

34°0'0"N

33°30'0"N

33°0'0"N

32°30'0"N

122°0'0"W

121°30'0"W

121°0'0"W

120°30'0"W

120°0'0"W

119°30'0"W

119°0'0"W

0 25 50 100 Kilometers