



NOAA Okeanos Explorer Program

ROV Dive Planning Form

Please use this as a template for documenting your recommendations for high-priority dive targets. Be sure to include a rationale for the dive as well as specific protocols (if applicable), and any known previous work or potential hazards at the site. Please include only generalized location information for any marine archaeology sites.

The form also includes fields for mapping targets and CTD cast locations as well.

Please send the completed form to Kelley.Elliott@noaa.gov and Brian.Kennedy@noaa.gov.

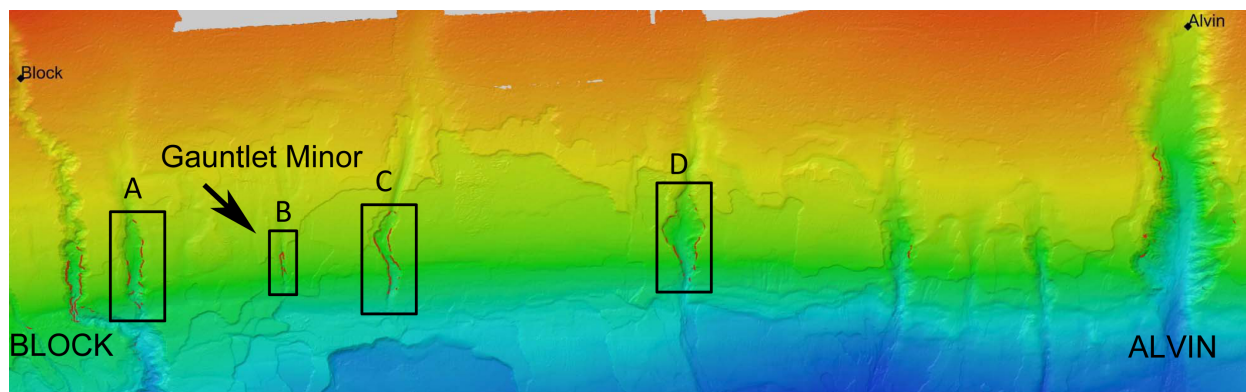
Site Name: GAUNTLET MINOR

Approximate Location: Longitude, Latitude, Depth = -71.123W, 39.816N,, 1110 m (Waypoint 1)

Dive Date (local): DATE (2013/07/24)

Site map:

The map below is an overview of the intercanions between Block and Alvin Canyons. The Dive will target the area "Gauntlet Minor".



Brief Explanation of Exploration Objectives and Rationale for the Desired Dive Track:

The objectives of this dive are to characterize the geomorphology and benthic fauna, including deep-sea coral and sponge communities, along both the west and east wall of an intercanion. We are focusing on at least two upslope transects that are situated on both canyon walls. The dive track was chosen based on areas of high slope.

Has previous work been conducted here? Are there potential hazards in the area?

No

UPDATED: July 23, 2013



NOAA Okeanos Explorer Program

ROV Dive Planning Form

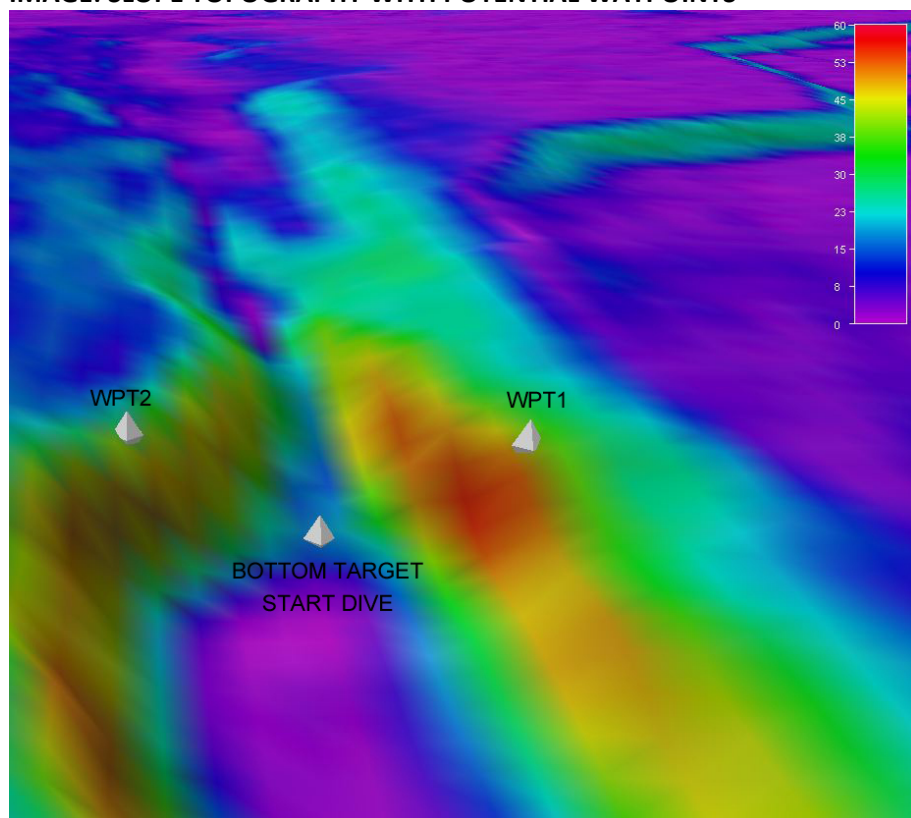
ROV Track Waypoints Table:

<i>DESIRED WAYPOINTS TO EXPLORE - (COMPLETED BY SHORE-SIDE LEAD SCIENTIST) (not including launch)</i>				<i>ACTUAL WAYPOINTS TO EXPLORE- (COMPLETED BY SHIPBOARD EXPEDITION LEADER)</i>			
WAYPOINT NAME/SEQUENCE	LATITUDE	LONGITUDE	APPROX DEPTH	WAYPOINT NAME/SEQUENCE	LATITUDE	LONGITUDE	APPROX DEPTH
Launch				Launch	39.81678265	-71.1233554	-1110.39
WP1				WP1	39.81657157	-71.12208683	-1029.91
WP2				WP2	39.81700299	-71.12462403	-1036.15

DIVE PLAN OVERVIEW

The ROV will reach the bottom target and be able to transect up slope on the east wall, and then come back down slope and move to the west where it will be able to conduct an up slope transect on the west wall. First canyon dive where both walls can be transected as only 200 m lies between both sides.

IMAGE: SLOPE TOPOGRAPHY WITH POTENTIAL WAYPOINTS





NOAA *Okeanos Explorer* Program

ROV Dive Planning Form

ANCILLARY INFORMATION:

RECOMMENDED OPERATIONS IN THE TARGET AREA PRIOR TO OR AFTER ROV DIVE *Please include requests for in situ sensors (LSS, DO, ORP) to be added to the CTD cast here, and specifics on the type of mapping operation requested (multibeam, subbottom, single beam).*

	LATITUDE	LONGITUDE	APPROX DEPTH
CTD CASTS			
1			
2			
3			
4			
MAPPING AREA BOUNDING COORDINATES			
North			
East			
South			
West			