



NOAA Okeanos Explorer Program

ROV Dive Planning Form

Please use this as a template for documenting your recommendations for high-priority dive targets. Be sure to include a rationale for the dive as well as specific protocols (if applicable), and any known previous work or potential hazards at the site. Please include only generalized location information for any marine archaeology sites.

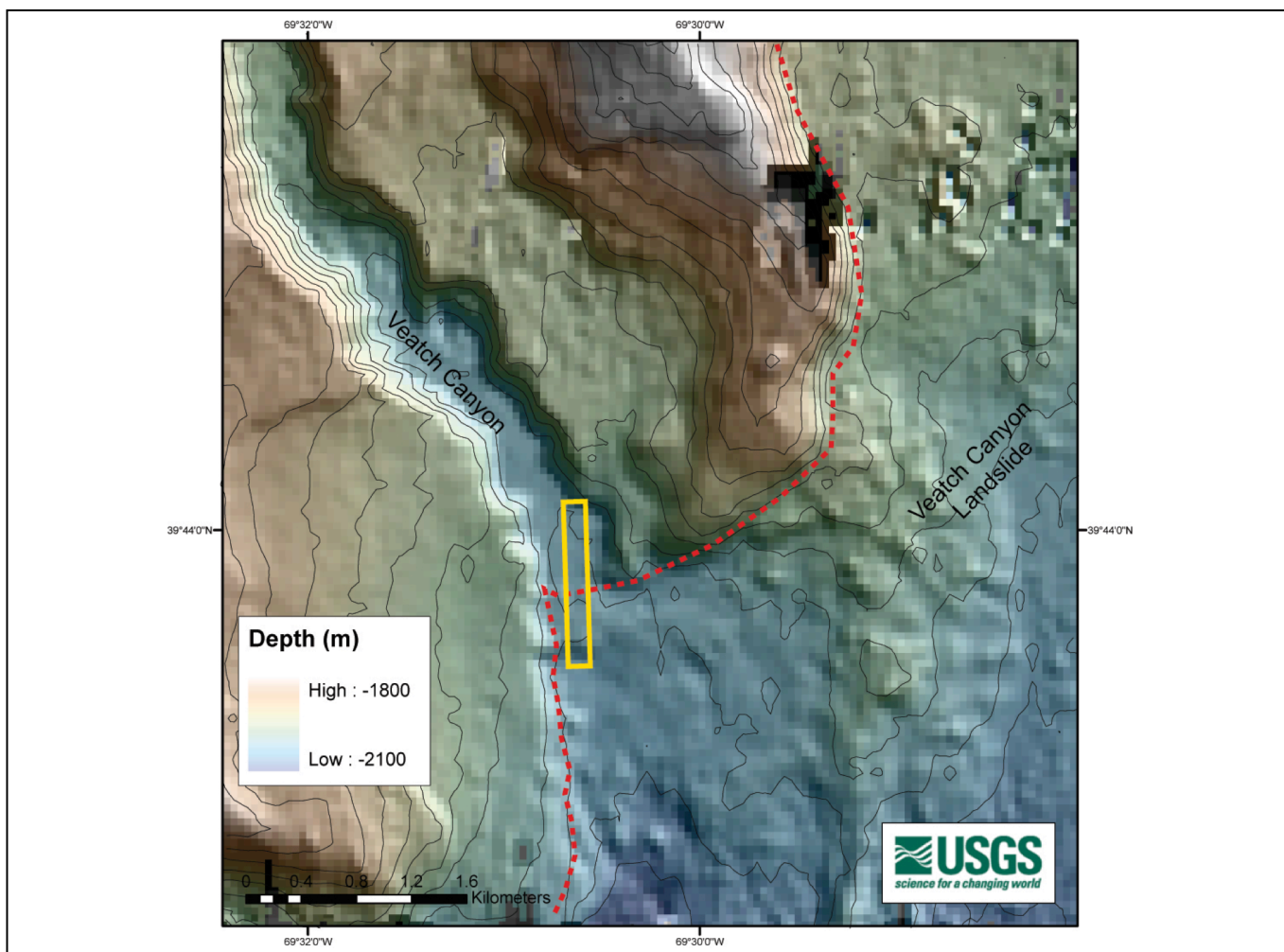
The form also includes fields for mapping targets and CTD cast locations as well.

Please send the completed form to Kelley.Elliott@noaa.gov and Brian.Kennedy@noaa.gov.

Site Name: USGS-Hazards 2

Approximate Location: 39.72950, -69.51018

Dive Date (local): DATE (2013/07/20)



UPDATED: July 19, 2013



NOAA Okeanos Explorer Program

ROV Dive Planning Form

Brief Explanation of Exploration Objectives and Rational for the Desired Dive Track: The purpose of this proposed dive is to investigate the transition (marked by the red dashed line on the map) from canyon processes to landslide deposition within Veatch Canyon to establish relative timing of the landslide event. The Veatch Canyon landslide breaches the eastern levee of Veatch Canyon and deposits debris within the canyon, blocking the normal sediment transport pathway. If Veatch Canyon is still active, the landslide may be relatively young (Recent), but if Veatch Canyon has been inactive since the LGM, the landslide may be late Pleistocene in age.

Has previous work been conducted here? Are there potential hazards in the area? The proposed dive area has been investigated by the USGS using multibeam bathymetry, multi-channel seismic reflection data, sub-bottom profiles and cores. No known hazards.

ROV Track Waypoints Table:

<i>DESIRED WAYPOINTS TO EXPLORE - (COMPLETED BY SHORE-SIDE LEAD SCIENTIST) (not including launch)</i>				<i>ACTUAL WAYPOINTS TO EXPLORE- (COMPLETED BY SHIPBOARD EXPEDITION LEADER)</i>			
WAYPOINT NAME/SEQUENCE	LATITUDE	LONGITUDE	APPROX DEPTH	WAYPOINT NAME/SEQUENCE	LATITUDE	LONGITUDE	APPROX DEPTH
Launch	39 43.6859	-69 30.5223	2022	Launch	39 43.6859	-69 30.5223	2022
WP1	39 43.9626	-69 30.6702	2024	WP1	39 43.9626	-69 30.6702	2024
WP2	39 44.0416	-69 31.0727	1964	WP2	39 44.0416	-69 31.0727	1964
WP3				WP3			
WP4				WP4			
WP5				WP5			
Recovery				Recovery			



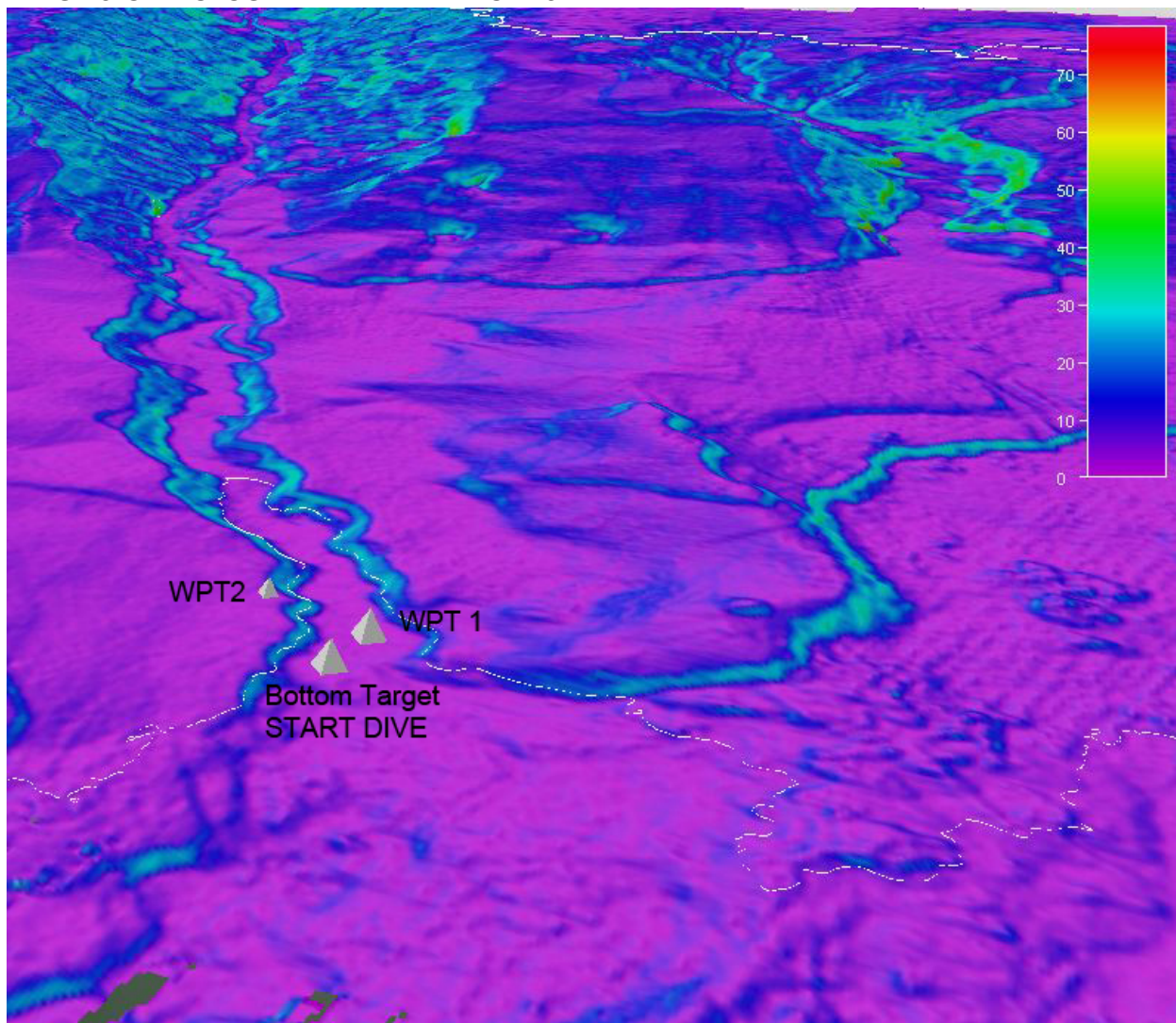
NOAA *Okeanos Explorer* Program

ROV Dive Planning Form

DIVE PLAN OVERVIEW

The proposed general dive plan consists of investigating a transition zone from canyon processes to landslide deposition. Three waypoints suggested are approximately 1000 m apart, through which the ship will transit along a relatively flat area, reaching target depth of 2022-1964 m.

IMAGE: SLOPE TOPOGRAPHY WITH WAYPOINTS



ANCILLARY INFORMATION:

Sub-bottom profiles conducted after this dive.



NOAA *Okeanos Explorer* Program

ROV Dive Planning Form

RECOMMENDED OPERATIONS IN THE TARGET AREA PRIOR TO OR AFTER ROV DIVE

Please include requests for in situ sensors (LSS, DO, ORP) to be added to the CTD cast here, and specifics on the type of mapping operation requested (multibeam, subbottom, single beam).

	LATITUDE	LONGITUDE	APPROX DEPTH
CTD CASTS			
1			
2			
3			
4			
MAPPING AREA BOUNDING COORDINATES			
North			
East			
South			
West			