



# NOAA Okeanos Explorer Program

## ROV Dive Planning Form

Please use this as a template for documenting your recommendations for high-priority dive targets. Be sure to include a rationale for the dive as well as specific protocols (if applicable), and any known previous work or potential hazards at the site. Please include only generalized location information for any marine archaeology sites.

The form also includes fields for mapping targets and CTD cast locations as well.

Please send the completed form to [Kelley.Elliott@noaa.gov](mailto:Kelley.Elliott@noaa.gov) and [Brian.Kennedy@noaa.gov](mailto:Brian.Kennedy@noaa.gov).

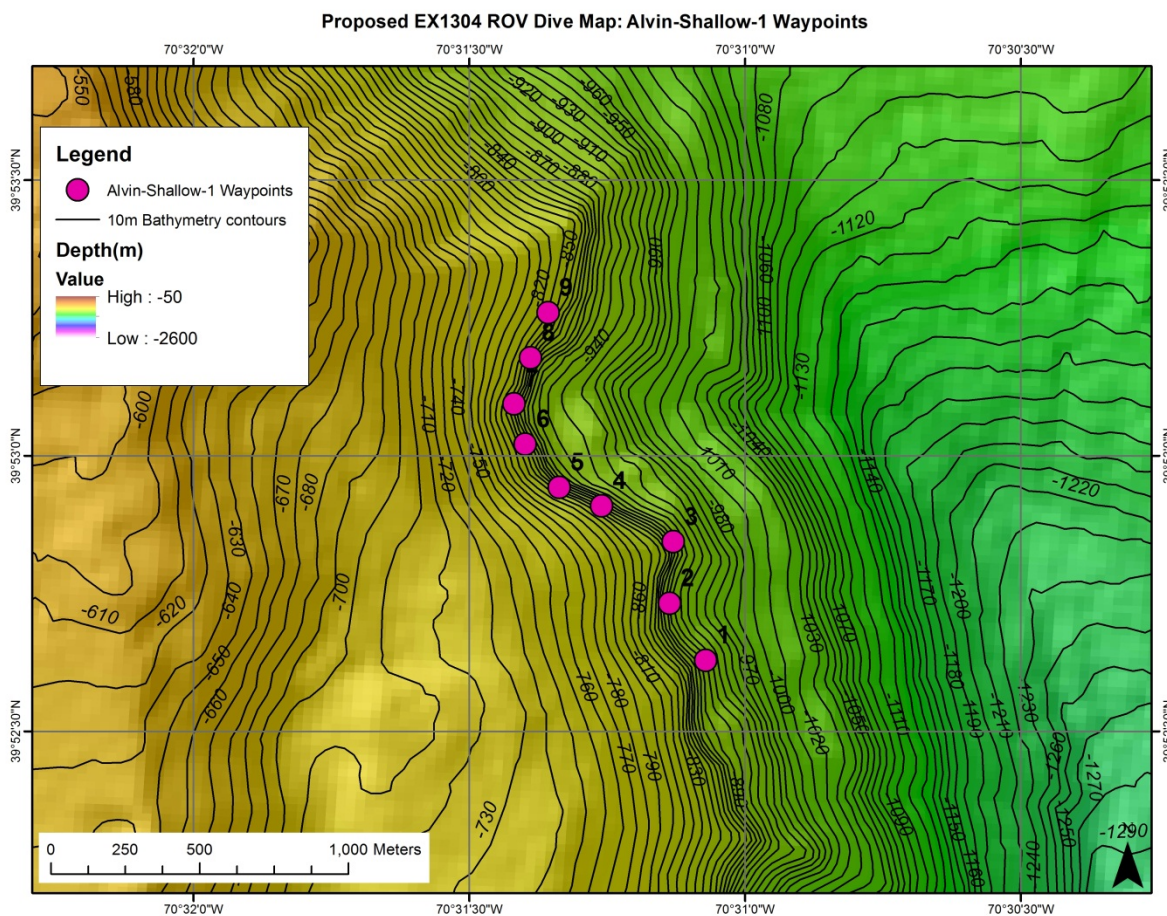
**Site Name:** ALVIN SHALLOW 1

**Approximate Location:** Longitude, Latitude, Depth = -70.5179, 39.8771, 928m (Waypoint 1)

**Dive Date (local):** DATE (2013/07/17)

### Site map:

Waypoints (numbered pink dots) overlaid on hillshaded bathymetric relief (from 25m mosaic of EX Atlantic Canyons multibeam bathymetry), with contours showing depth at 10m intervals





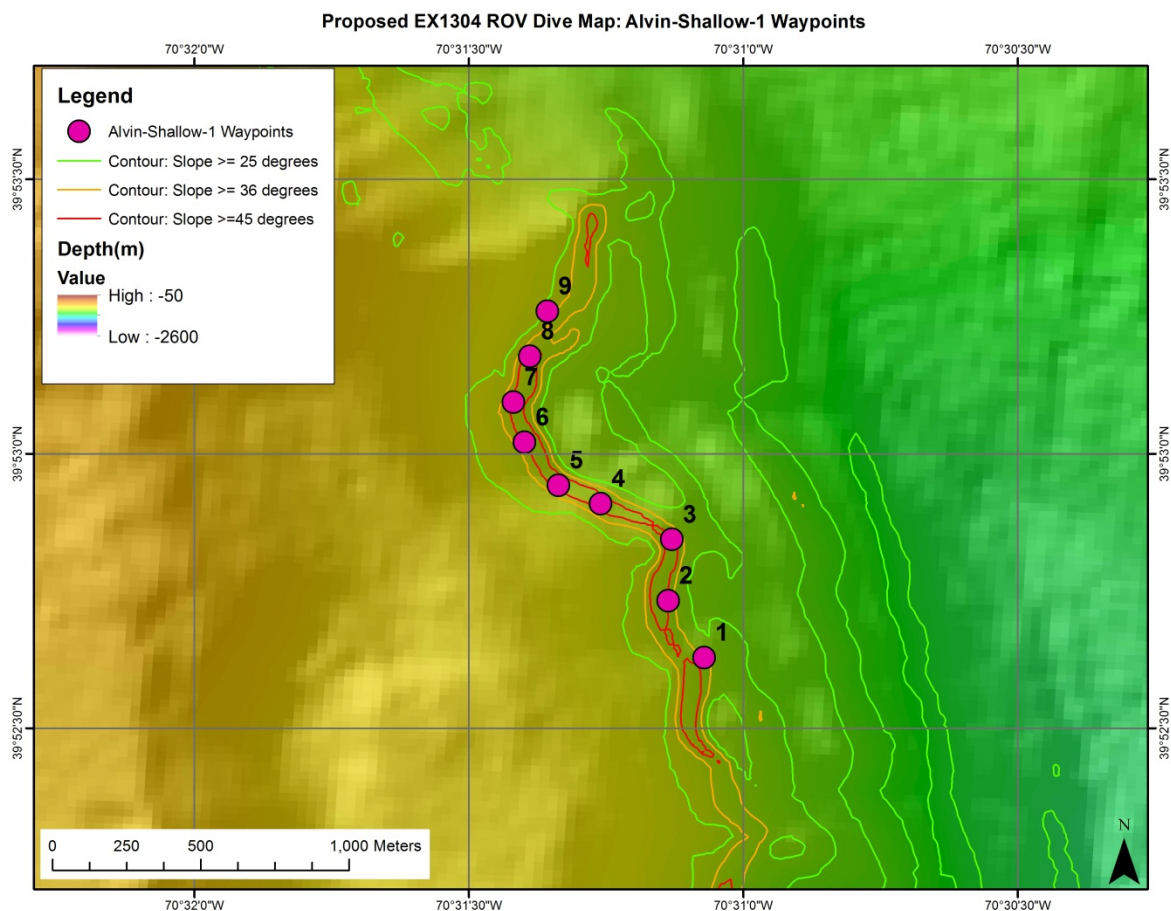
# NOAA Okeanos Explorer Program

## ROV Dive Planning Form

### Additional site map showing areas of high SLOPE:

Waypoints (numbered pink dots) overlaid on hillshaded bathymetric relief (from 25m mosaic of EX Atlantic Canyons multibeam bathymetry), with contours showing slope in degrees

(past experience in Atlantic canyon systems indicates consolidated substrate is likely where slope exceeds 36° [orange contours] and almost certain where slope exceeds 45° [red contours])



UPDATED: July 16, 2013



# NOAA Okeanos Explorer Program

## ROV Dive Planning Form

### Brief Explanation of Exploration Objectives and Rationale for the Desired Dive Track:

The dive track was chosen based on habitat prediction models for corals, often found in the canyons in areas with slopes >36 degrees. Proposed by Brian Kinlan and Tim Shank.

Has previous work been conducted here? Are there potential hazards in the area?

### ROV Track Waypoints Table:

<i>DESIRED WAYPOINTS TO EXPLORE - (COMPLETED BY SHORE-SIDE LEAD SCIENTIST) (not including launch)</i>				<i>ACTUAL WAYPOINTS TO EXPLORE- (COMPLETED BY SHIPBOARD EXPEDITION LEADER)</i>			
<b>WAYPOINT NAME/SEQUENCE</b>	<b>LATITUDE</b>	<b>LONGITUDE</b>	<b>APPROX DEPTH</b>	<b>WAYPOINT NAME/SEQUENCE</b>	<b>LATITUDE</b>	<b>LONGITUDE</b>	<b>APPROX DEPTH</b>
Launch				Launch Target	39.88258008	-70.52198621	-913.5
WP1	- 70.51786299	- 39.87714149	- -928.01	WP1	39.88235165	-70.52226824	-880.31
WP2	- 70.51894792	- 39.87886633	- -919.99	WP2	39.88368114	-70.52330114	-861.19
WP3	- 70.51883675	- 39.88073014	- -905.35	WP3	39.88487691	-70.5236222	-848.58
WP4	- 70.52100661	- 39.88181507	- -868.1	WP4	39.88631204	-70.52313619	-857.68
WP5	- 70.52228642	- 39.8823716	- -856.64	WP5			
WP6	- 70.52331577	- 39.88367888	- -846.53	WP6			
WP7	- 70.52364962	- 39.88490311	- -845.41	WP7			
WP8	- 70.52314868	- 39.8862941	- -846.14	WP8			
WP9	- 70.52262027	- 39.88765729	- -820.33	WP9			



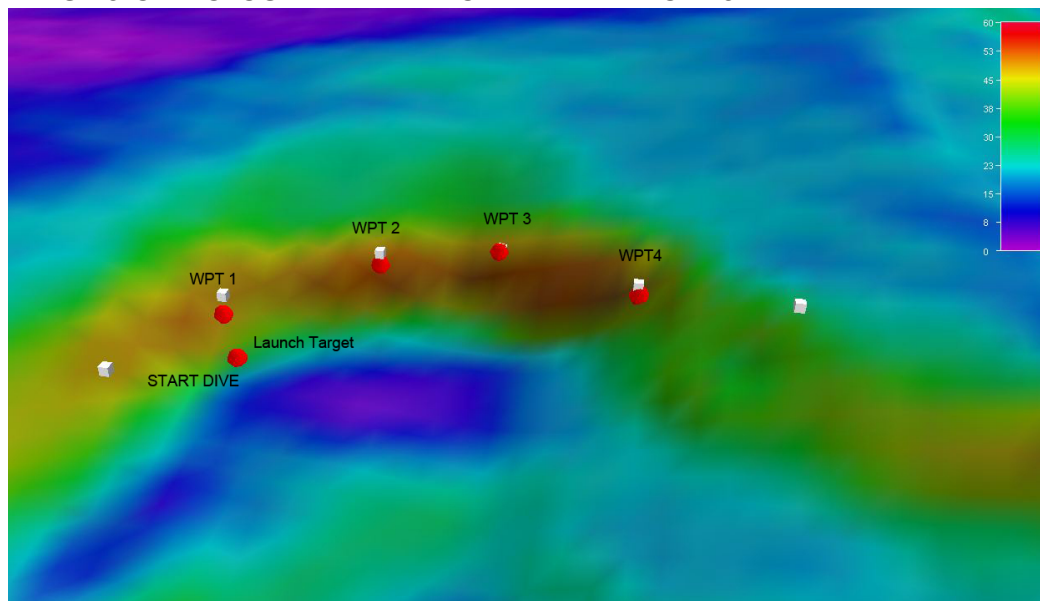
# NOAA Okeanos Explorer Program

## ROV Dive Planning Form

### DIVE PLAN OVERVIEW

Because of the length of the dive plan proposed, we modified the dive track to start at the base of the wall at proposed waypoint 5 (see map above), now labeled waypoint 1. The plan is to move up slope to first survey the topography through the first waypoint. We will then move towards waypoint 2, and then possibly jump off the feature to be able to move up and down slope, thereby crossing 100 m of bathymetry. The Dive track will be assessed throughout the day. We are targeting a depth range of 1030-850 m during the dive.

### IMAGE: SLOPE TOPOGRAPHY WITH POTENTIAL WAYPOINTS



### ANCILLARY INFORMATION:

A CTD CAST WILL BE CONDUCTED, AND MAPPING OPERATIONS WILL CONTINUE

### RECOMMENDED OPERATIONS IN THE TARGET AREA PRIOR TO OR AFTER ROV DIVE

Please include requests for in situ sensors (LSS, DO, ORP) to be added to the CTD cast here, and specifics on the type of mapping operation requested (multibeam, subbottom, single beam).

	LATITUDE	LONGITUDE	APPROX DEPTH
<b>CTD CASTS</b>			
1			
2			
3			