



NOAA Okeanos Explorer Program

ROV Dive Planning Form

Please use this as a template for documenting your recommendations for high-priority dive targets. Be sure to include a rationale for the dive as well as specific protocols (if applicable), and any known previous work or potential hazards at the site. Please include only generalized location information for any marine archaeology sites.

The form also includes fields for mapping targets and CTD cast locations as well.

Please send the completed form to Kelley.Elliott@noaa.gov and Brian.Kennedy@noaa.gov.

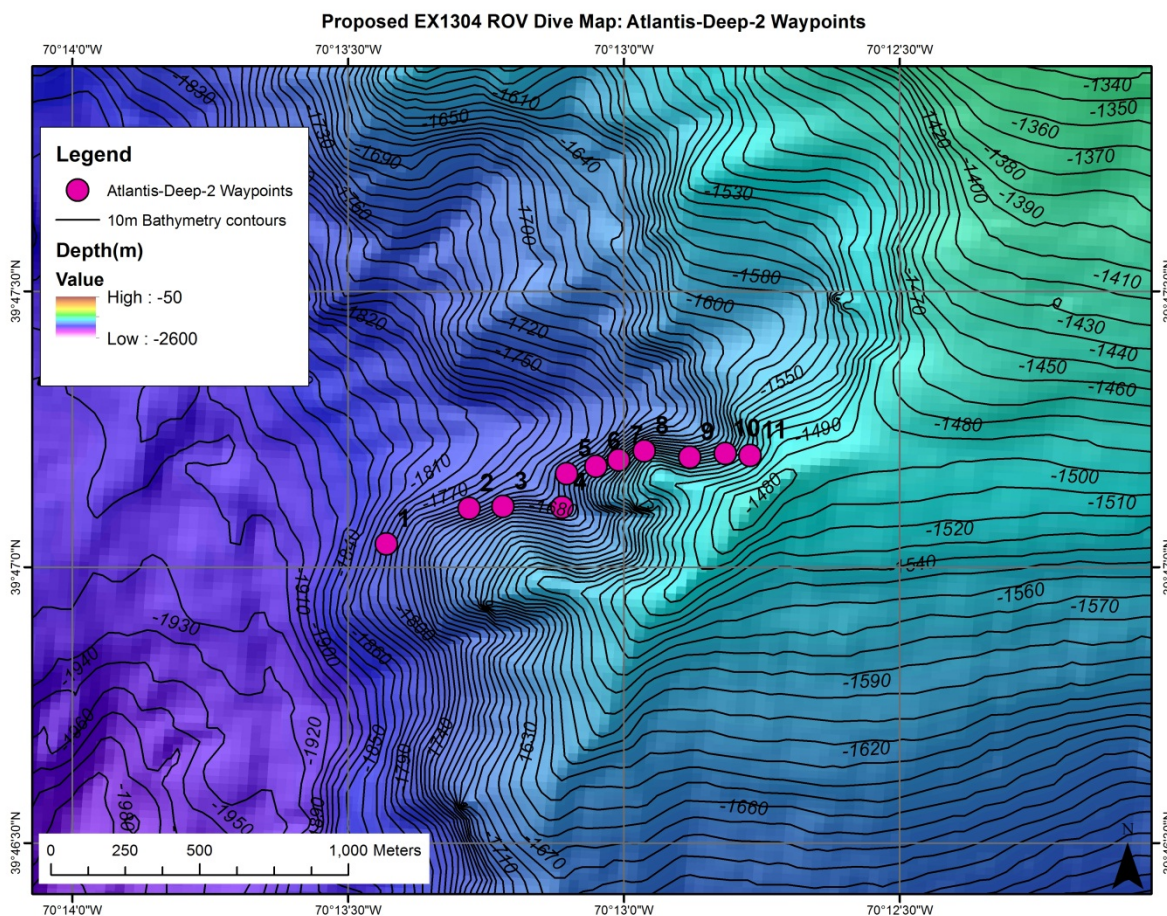
Site Name: ATLANTIS DEEP 2

Approximate Location: Longitude, Latitude, Depth = -70.2239, 39.7840, 1804m (Waypoint 1)

Dive Date (local): DATE (2013/07/16)

Site map:

Waypoints (numbered pink dots) overlaid on hillshaded bathymetric relief (from 25m mosaic of EX Atlantic Canyons multibeam bathymetry), with contours showing depth at 10m intervals



UPDATED: July 15, 2013



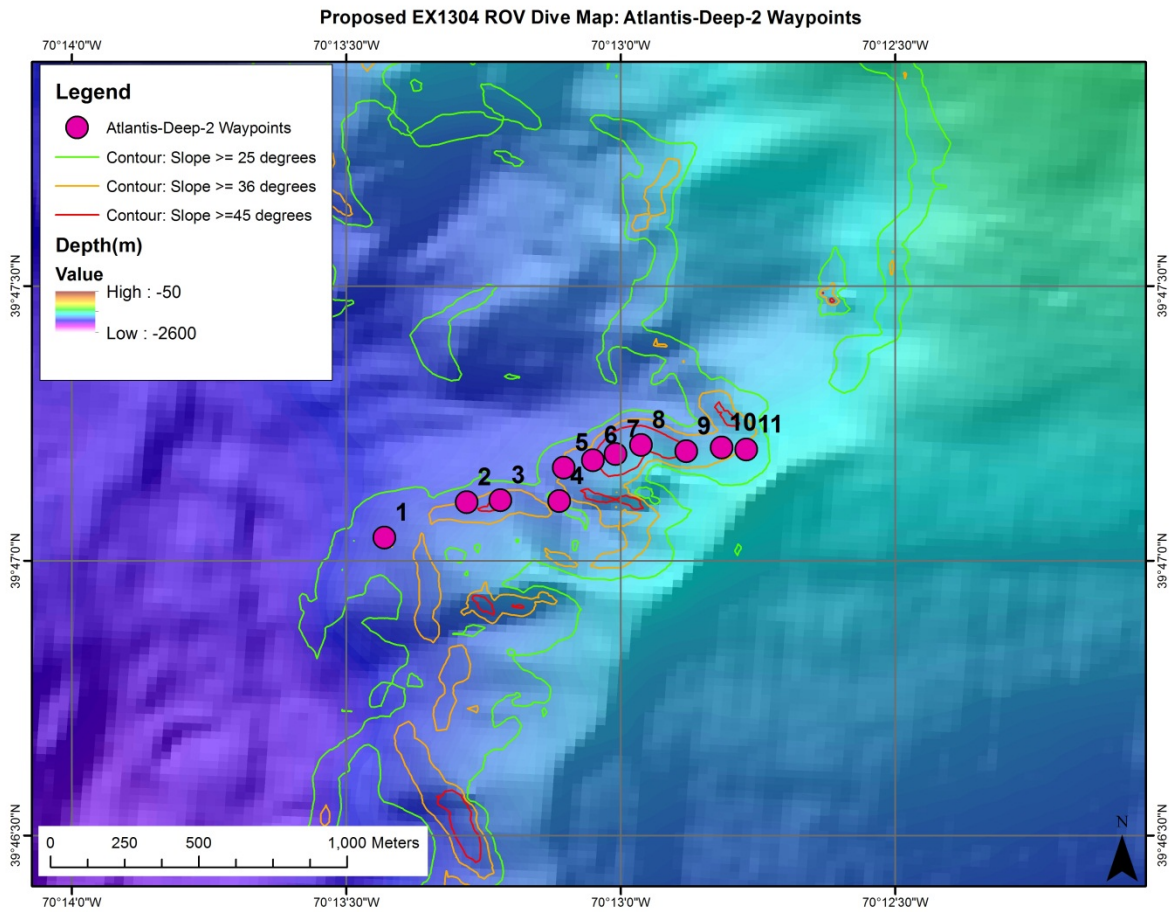
NOAA *Okeanos Explorer* Program

ROV Dive Planning Form

Additional site map showing areas of high SLOPE:

Waypoints (numbered pink dots) overlaid on hillshaded bathymetric relief
(from 25m mosaic of EX Atlantic Canyons multibeam bathymetry),
with contours showing slope in degrees

(past experience in Atlantic canyon systems indicates consolidated substrate is likely where slope exceeds 36° [orange contours] and almost certain where slope exceeds 45° [red contours])



UPDATED: July 15, 2013



NOAA Okeanos Explorer Program

ROV Dive Planning Form

Brief Explanation of Exploration Objectives and Rationale for the Desired Dive Track:

The dive track was chosen based on habitat prediction models for corals, often found in the canyons in areas with slopes >36 degrees. Proposed by Brian Kinlan and Tim Shank.

Has previous work been conducted here? Are there potential hazards in the area?

ROV Track Waypoints Table:

<i>DESIRED WAYPOINTS TO EXPLORE - (COMPLETED BY SHORE-SIDE LEAD SCIENTIST) (not including launch)</i>				<i>ACTUAL WAYPOINTS TO EXPLORE- (COMPLETED BY SHIPBOARD EXPEDITION LEADER)</i>			
WAYPOINT NAME/SEQUENCE	LATITUDE	LONGITUDE	APPROX DEPTH	WAYPOINT NAME/SEQUENCE	LATITUDE	LONGITUDE	APPROX DEPTH
Launch				Launch			
WP1	70.22385115	39.78403768	-1804.04	WP1	39.78659662	-70.21985107	-1778.45
WP2	70.22134485	39.78511195	-1757.78	WP2	39.78621	-70.21842791	-1715.84
WP3	70.22032584	39.78516689	-1723.59	WP3	39.78641762	-70.21757661	-1695.62
WP4	70.21853572	39.78513942	-1710.68	WP4	39.78660911	-70.21686477	-1651.07
WP5	70.21839805	39.78615842	-1712.03	WP5	39.78687813	-70.21606967	-1611.29
WP6	70.21751672	39.78637883	-1679.99	WP6	39.78667311	-70.2147178	-1600.36
WP7	70.21682801	39.78657177	-1645.37	WP7	39.78682298	-70.21364796	-1587.09
WP8	70.21605689	39.78684713	-1597.51	WP8	39.78672203	-70.21297462	-1535.37
WP9	-70.2146798	39.78665419	-1585.74	WP9			
WP10	70.21360586	39.78676439	-1572.13	WP10			
WP11	70.21286221	39.78670945	-1531.46	WP11			
WP12				WP12			
WP13				WP13			
WP14				WP14			
WP15				WP15			
Recovery				Recovery			



NOAA *Okeanos Explorer* Program

ROV Dive Planning Form

DIVE PLAN OVERVIEW

Because of the length of the dive plan proposed, we modified the dive track to start at the base of the west wall in between proposed waypoints 4 and 5 (see map above). The plan is to move up slope to first survey the topography and then start sliding east along the slope. We plan to target a depth range of 1800-1500 m during the dive.

IMAGE: SLOPE TOPOGRAPHY WITH WAYPOINTS

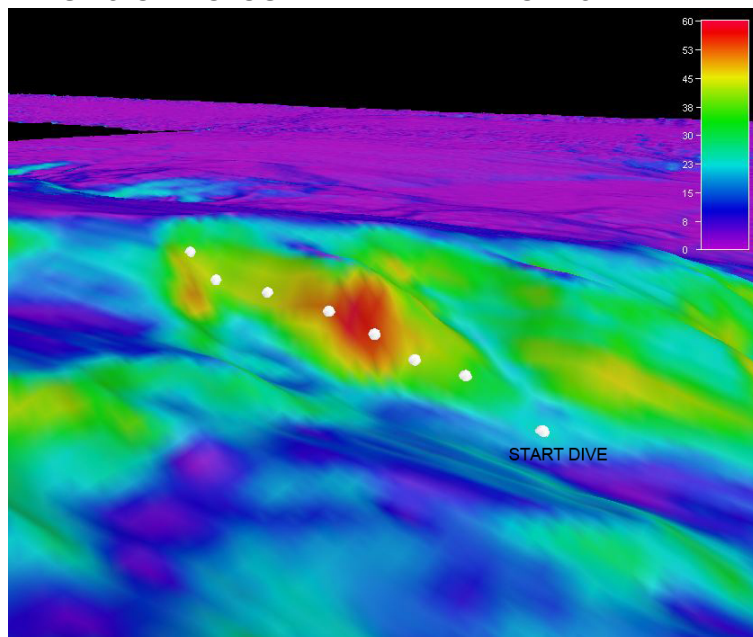
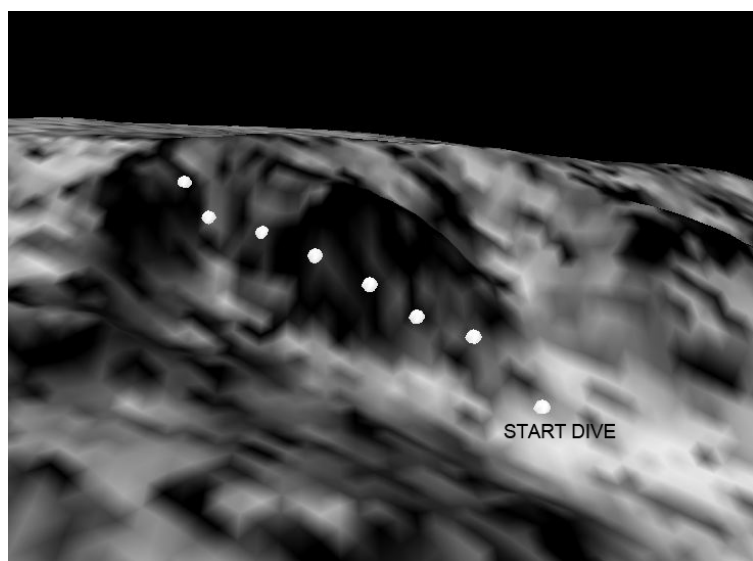


IMAGE: BACKSCATTER DATA WITH WAYPOINTS





NOAA *Okeanos Explorer* Program

ROV Dive Planning Form

ANCILLARY INFORMATION:

A CTD CAST WITH WATER SAMPLING WILL BE COLLECTED AFTER THE DIVE

RECOMMENDED OPERATIONS IN THE TARGET AREA PRIOR TO OR AFTER ROV DIVE

Please include requests for in situ sensors (LSS, DO, ORP) to be added to the CTD cast here, and specifics on the type of mapping operation requested (multibeam, subbottom, single beam).

	LATITUDE	LONGITUDE	APPROX DEPTH
CTD CASTS			
1			
2			
3			
4			
MAPPING AREA BOUNDING COORDINATES			
North			
East			
South			
West			