



NOAA Okeanos Explorer Program

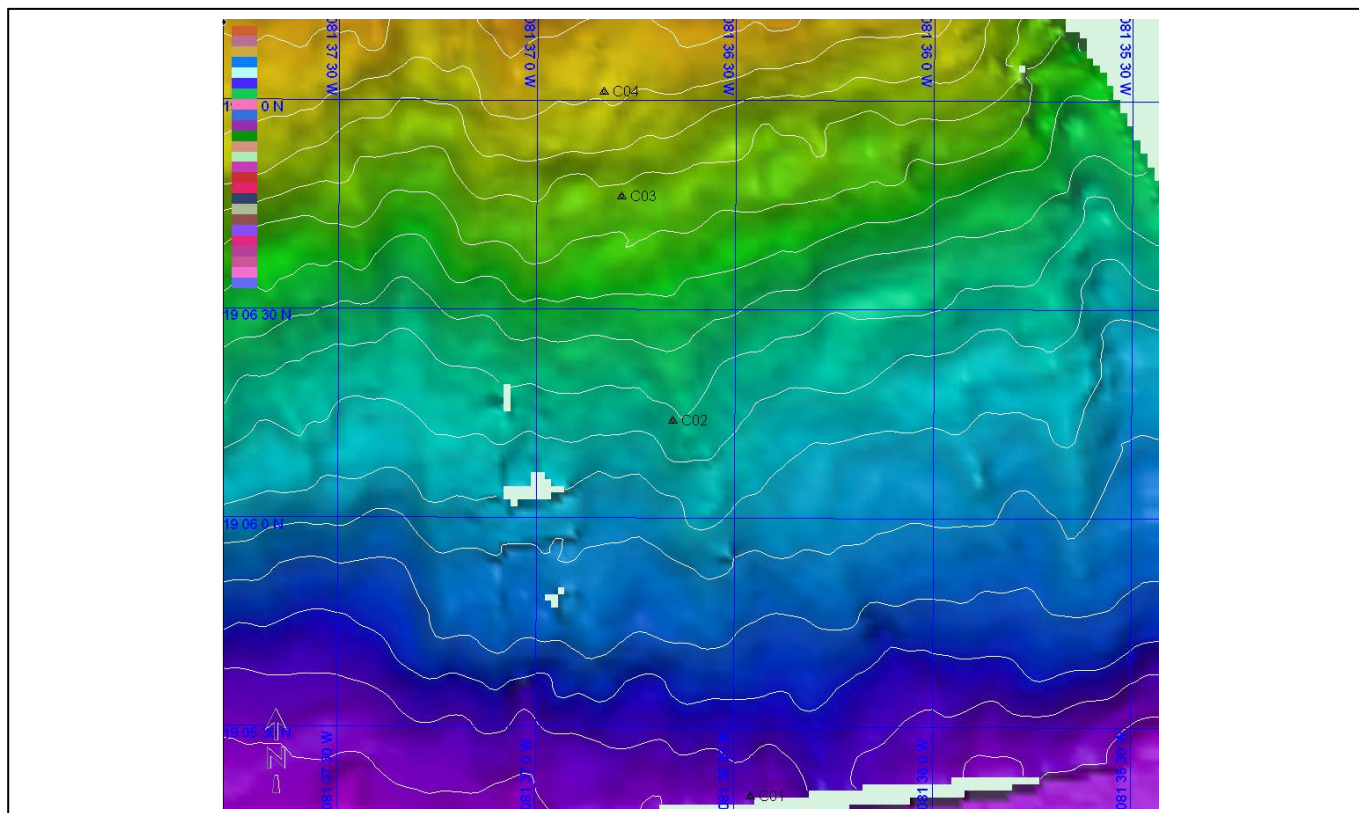
ROV Dive Planning Form

Science Team develops draft dive track two days before a planned dive. Expedition Leader responds overnight based on ship capabilities, programmatic considerations, and constraints. Plan is finalized the day before a dive

Site Name: North Cayman Trough

Approximate Location: 19° 5.334' N, 81° 36.458' W

Dive Date (local): August 15, 2011





NOAA Okeanos Explorer Program

ROV Dive Planning Form

Brief Explanation of Exploration Objectives and Rational for the Desired Dive Track:

Science Rationale:

Conduct a geological and biological transect from South to North up the interior (south-facing) wall of the North Cayman Fracture Zone. We know of no similar study in this, or perhaps any other, Fracture Zone even though, along with ridges and trenches, they represent one of the three major types of Plate Tectonic Boundary.

Operations Response/Rationale:

The ship plans to launch the ROV at approximately 0800. The time from the start of launch to the start of the dive on the seafloor at waypoint C01 (3250m) is approximately 2 hours 30 minutes. The approximate time to go from waypoint C01 to C03 (2700m) at an average of 0.24kts is approximately 6 hours 10 minutes. We may not make it waypoint C03. The time from the bottom at 2000m to 50m is 1 hour 20 minutes, and the time for ROV recovery is 30 minutes, with the ROV secured on deck at 1830 ship time.

ROV Track Waypoints Table:

<i>DESIRED WAYPOINTS TO EXPLORE - (COMPLETED BY SHORE-SIDE LEAD SCIENTIST) (not including launch)</i>				<i>ACTUAL WAYPOINTS TO EXPLORE- (COMPLETED BY SHIPBOARD EXPEDITION LEADER)</i>			
WAYPOINT NAME	LATITUDE	LONGITUDE	APPROX DEPTH	WAYPOINT NAME/SEQUENCE	LATITUDE	LONGITUDE	APPROX DEPTH
Launch				Launch			
C01	19° 5.334'	81° 36.458'	3500m				



NOAA *Okeanos Explorer* Program

ROV Dive Planning Form



NOAA *Okeanos Explorer* Program

ROV Dive Planning Form

C01	19° 5.334'	81° 36.458'	3500m				

ANCILLARY INFORMATION:

COMPLETED BY SHORE-SIDE LEAD SCIENTIST

Are there additional operations recommended in the target area prior to the ROV dive?

	LATITUDE	LONGITUDE	APPROX DEPTH
CTD CASTS			
1	None	None	
2			
3			
4			
MULTIBEAM BOUNDING COORDINATES			
1	None	None	
2			
3			
4			