



Taylor Heyl/ WHOI Exploration Command Center/WHOI/theyl@whoi.edu  
Lucy C. Stewart/ UMASS Amherst/lstewart@cns.umass.edu  
Mashkoor Malik/ NOAA Office of Ocean Exploration & Research/mashkoor.malik@noaa.gov  
Meme Lobecker/ NOAA Office of Ocean Exploration & Research/ Elizabeth.Lobecker@noaa.gov

**Purpose of the Dive**

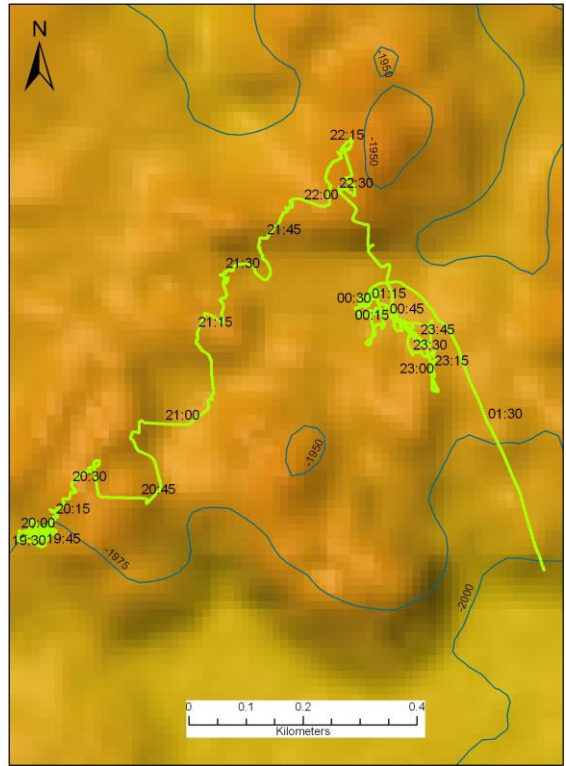
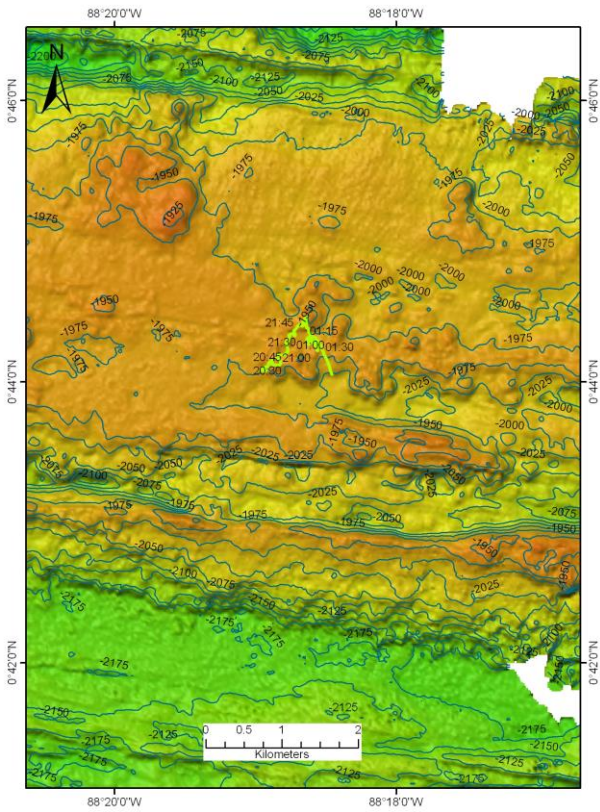
To descend with the ROV Little Hercules to a site on the Galapagos Rift where strong hydrothermal plume signals were detected few weeks ago, and traverse toward WP2- Plume target 2a, exploring the vicinity for hydrothermal activity.

**Description of the Dive:**

At the start of this dive, we transited NE over pillow mounds in an area of 1 meter collapses with small pillars displaying bathtub rings. *Little Hercules* then moved 200 meters to the north to locate the extent of the linear collapses and the northern boundary. We traversed toward Plume target 2a and explored the vicinity, transiting across a graben structure and confirming the northern margin of that structure. *Little Hercules* came across a new lava flow within a broad 10 meter fissure; black fresh flow about 1-3 meters into the fissure with iron-oxide staining on the flow breaks and pillow margins. Just prior to seeing this new flow in the fissure, we located a contact between younger lava and much older material. The dive ended by looking at and imaging a wall of truncated pillow lava.

**Overall Map of ROV Dive Area**

**Close-up Map of Main Dive Site**



**Representative Photos of the Dive**

XXX

XXX

**Please direct inquiries to:**

NOAA Office of Ocean Exploration & Research  
 1315 East-West Highway (SSMC3 10<sup>th</sup> Floor)  
 Silver Spring, MD 20910  
 (301) 734-1014