

Taylor Heyl/ WHOI Exploration Command Center/WHOI/theyl@whoi.edu
Lucy C. Stewart/ UMASS Amherst/lstewart@cns.umass.edu
Mashkoor Malik/ NOAA Office of Ocean Exploration & Research/mashkoor.malik@noaa.gov
Meme Lobecker/ NOAA Office of Ocean Exploration & Research/ Elizabeth.Lobecker@noaa.gov

Purpose of the Dive

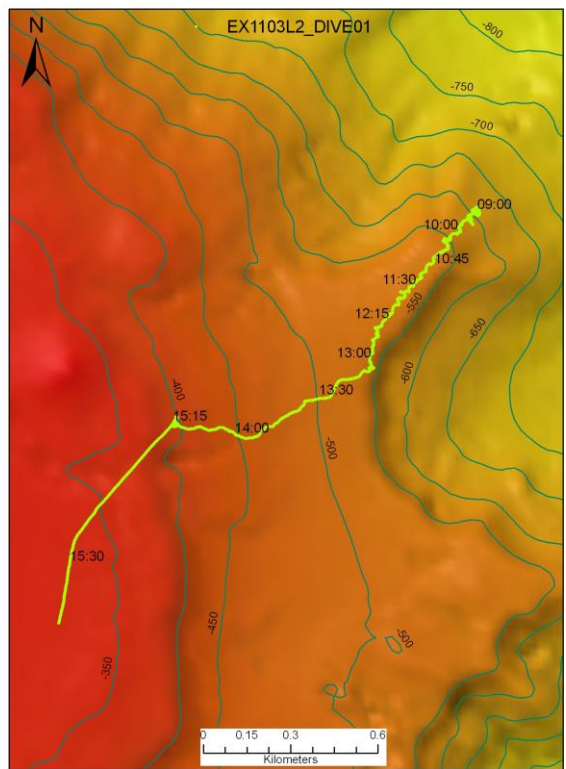
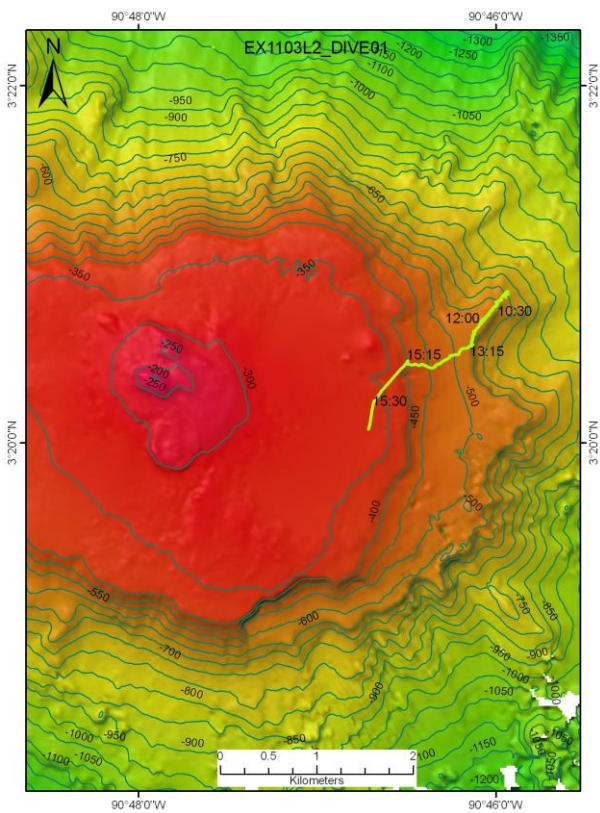
The location of this dive on the eastern side of Paramount seamount at approximately 600 meters depth was chosen based on multibeam, backscatter and current data. The goal was to characterize the biological communities on the Seamount, and make comparisons with 2010 INDEX expedition to the Sangihe Talaud region in Indonesia.

Description of the Dive:

The ROV *Little Hercules* began this dive at approximately 800 meters depth and moved upslope to explore the rim of the seamount. We transited to the west toward a large promontory 8 meters away. As we moved upslope, there was an increase in abundance of organisms and a general trend of high abundance of corals, but with low diversity. The summit margin was characterized by a high abundance of white brachiopods and pink brittle stars in the 400 meter shallow zone along the summit margin. Multiple ophiuroids, brachiopods, and white sponges were found on a sediment-covered seafloor with occasional isolated cobbles and small boulders and brittle stars were observed on a red rocky substrate, hypothesized to be fossil shallow-water corals.

Overall Map of ROV Dive Area

Close-up Map of Main Dive Site



Representative Photos of the Dive

XXX

XXX

Please direct inquiries to:

NOAA Office of Ocean Exploration & Research
 1315 East-West Highway (SSMC3 10th Floor)
 Silver Spring, MD 20910
 (301) 734-1014