



NOAA Okeanos Explorer Program

ROV Dive Planning Form

Please use this as a template for documenting your recommendations for high-priority dive targets. Be sure to include a rationale for the dive as well as specific protocols (if applicable), and any known previous work or potential hazards at the site. Please include only generalized location information for any marine archaeology sites.

The form also includes fields for mapping targets and CTD cast locations as well.

Please send the completed form to Kelley.Elliott@noaa.gov and Brian.Kennedy@noaa.gov.

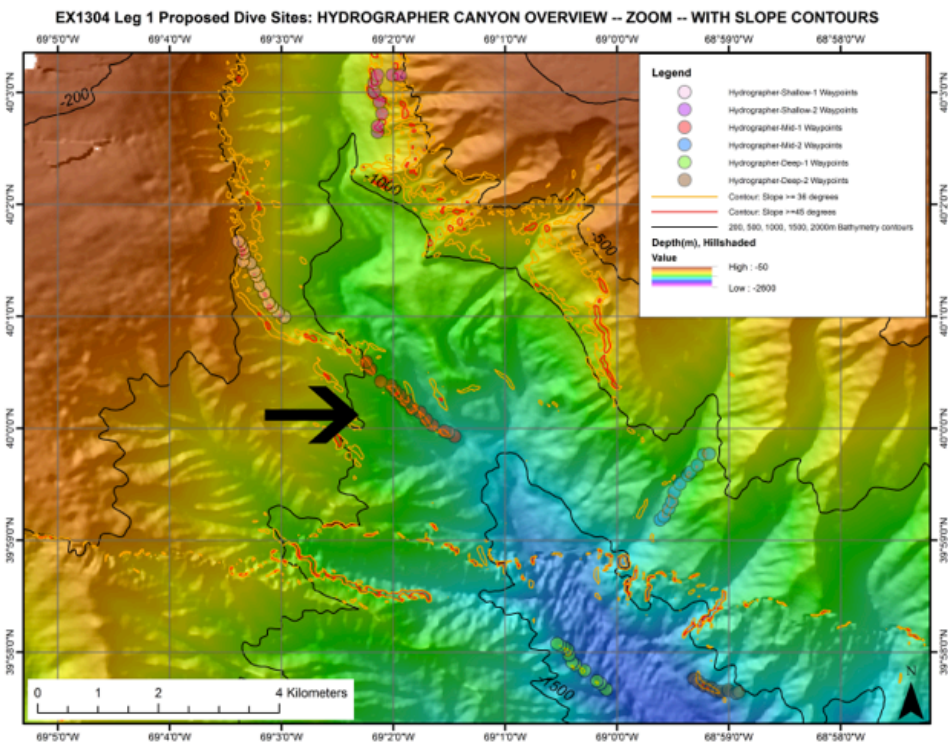
Site Name: HYDROGRAPHER MID 1

Approximate Location: Longitude, Latitude, Depth = -69.0241, 39.99939, 1424

Dive Date (local): DATE (2013/07/13)

Site map:

The map below details several potential dive tracks in Hydrographer Canyon. The dive at Hydro-Mid 1 will take place on the west wall (indicated by arrow) to explore deep-sea coral communities.



UPDATED: July 12, 2013



NOAA Okeanos Explorer Program

ROV Dive Planning Form

Brief Explanation of Exploration Objectives and Rationale for the Desired Dive Track:

The dive track was chosen based on habitat prediction models for corals, often found in the canyons in areas with slopes >36 degrees. Proposed by Brian Kinlan and Tim Shank.

Has previous work been conducted here? Are there potential hazards in the area?

ROV Track Waypoints Table:

<i>DESIRED WAYPOINTS TO EXPLORE - (COMPLETED BY SHORE-SIDE LEAD SCIENTIST) (not including launch)</i>				<i>ACTUAL WAYPOINTS TO EXPLORE- (COMPLETED BY SHIPBOARD EXPEDITION LEADER)</i>			
WAYPOINT NAME/SEQUENCE	LATITUDE	LONGITUDE	APPROX DEPTH	WAYPOINT NAME/SEQUENCE	LATITUDE	LONGITUDE	APPROX DEPTH
Launch				Launch			
WP1				WP1	39.99939112	-69.02410747	-1424.02
WP2	39.99879687	-69.02503005	-1359.88	WP2	39.99879687	-69.02503005	-1359.88
WP3	40.00077421	-69.02807879	-1309.26	WP3	40.00077421	-69.02807879	-1309.26
WP4	40.00366424	-69.03120714	-1211.62	WP4	40.00366424	-69.03120714	-1211.62
WP5	40.00984185	-69.03724322	-1039.89	WP5	40.00984185	-69.03724322	-1039.89
WP6	40.01148876	-69.04050842	-881.71	WP6	40.01148876	-69.04050842	-881.71
WP7				WP7			
WP8				WP8			
WP9				WP9			
WP10				WP10			
WP11				WP11			



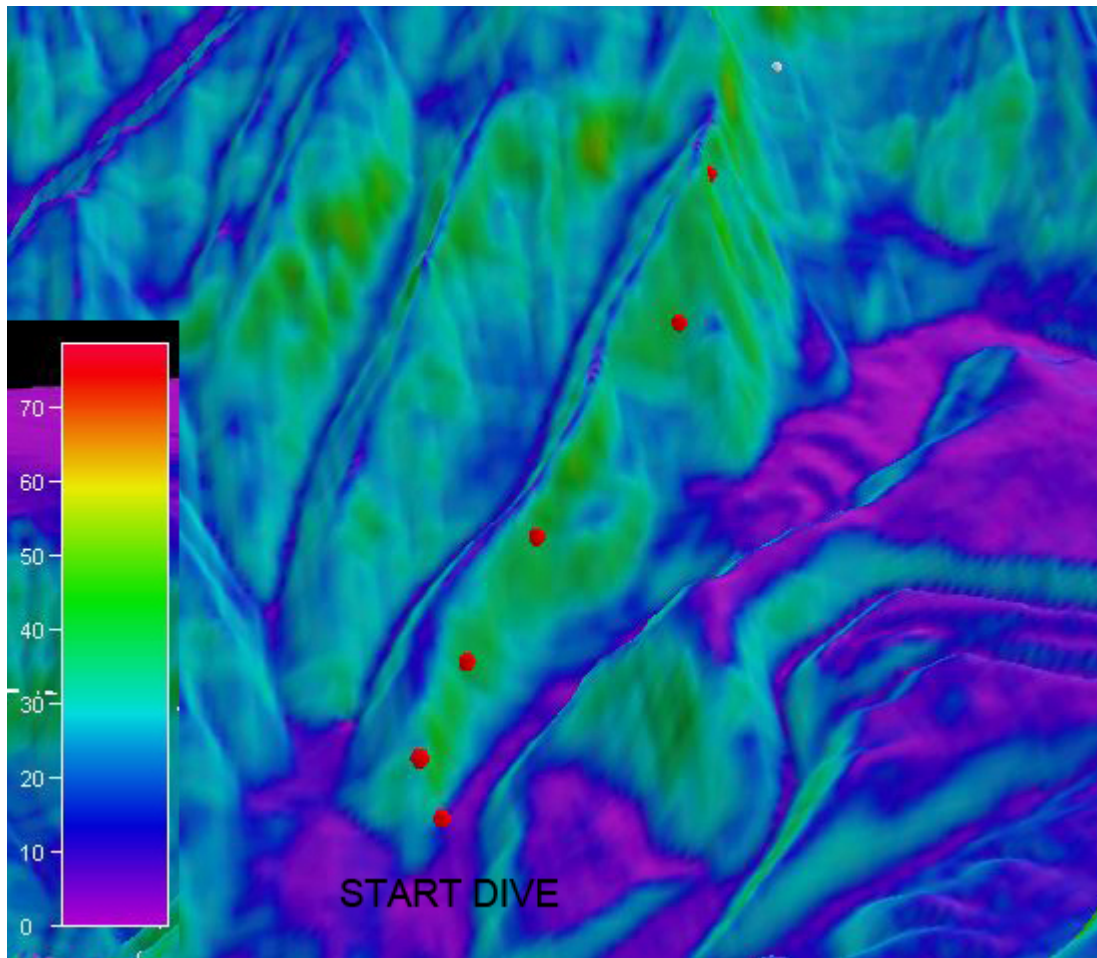
NOAA *Okeanos Explorer* Program

ROV Dive Planning Form

DIVE PLAN OVERVIEW

The proposed general dive plan consists of starting at the deepest point (1424 m) and transecting up slope through the second waypoint at 1359 m. The proposed dive track will then consist of the ROV moving laterally with the contour to point 2, where we will assess whether we want to move to point 3 or pick the ROV up to move to the shallowest two points (1040-881 m) along this proposed track. These decisions will depend upon if we are seeing coral communities in the deepest portion of this dive track.

IMAGE: SLOPE TOPOGRAPHY WITH WAYPOINTS



ANCILLARY INFORMATION:

UPDATED: July 12, 2013



NOAA *Okeanos Explorer* Program

ROV Dive Planning Form

RECOMMENDED OPERATIONS IN THE TARGET AREA PRIOR TO OR AFTER ROV DIVE

Please include requests for in situ sensors (LSS, DO, ORP) to be added to the CTD cast here, and specifics on the type of mapping operation requested (multibeam, subbottom, single beam).

	LATITUDE	LONGITUDE	APPROX DEPTH
CTD CASTS			
1			
2			
3			
4			
MAPPING AREA BOUNDING COORDINATES			
North			
East			
South			
West			