



# NOAA *Okeanos Explorer* Program

## ROV Dive Planning Form

*Please use this as a template for documenting your recommendations for high-priority dive targets. Be sure to include a rationale for the dive as well as specific protocols (if applicable), and any known previous work or potential hazards at the site. Please include only generalized location information for any marine archaeology sites.*

*The form also includes fields for mapping targets and CTD cast locations as well.*

*Please send the completed form to [Kelley.Elliott@noaa.gov](mailto:Kelley.Elliott@noaa.gov) and [Brian.Kennedy@noaa.gov](mailto:Brian.Kennedy@noaa.gov).*

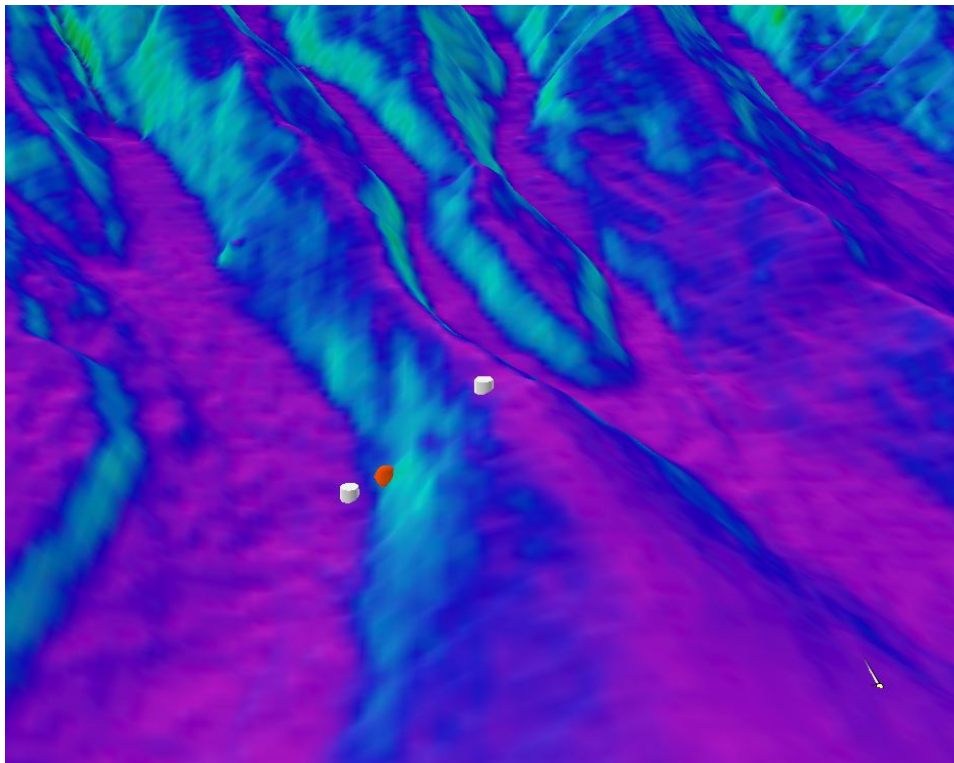
**Site Name:** New England Seeps 2

**Approximate Location:** -69.28604 39.86912

**Dive Date (local):** July 12, 2013

General dive plan is to start at the base of the slope and run through the seep point (in red) and continue up slope. We will conduct a basic search pattern as we move up slope, looking for hard returns on the sonar, while jogging east/west. After we reach the top of the ridge, we will assess the need to move along the ridge or come back down slope to make another move up slope.

### IMAGE: SLOPE TOPOGRAPHY WITH WAYPOINTS



UPDATED: July 11, 2013



# NOAA Okeanos Explorer Program

## ROV Dive Planning Form

**Brief Explanation of Exploration Objectives and Rational for the Desired Dive Track:** This site was detected as a potential seep site. An unverified water column anomaly was detected by Okeanos Explorer's EM302 multibeam.

**Has previous work been conducted here? Are there potential hazards in the area?** The proposed dive area has not been investigated in further detail.

### ROV Track Waypoints Table:

<i>DESIRED WAYPOINTS TO EXPLORE - (COMPLETED BY SHORE-SIDE LEAD SCIENTIST) (not including launch)</i>				<i>ACTUAL WAYPOINTS TO EXPLORE - (COMPLETED BY SHIPBOARD EXPEDITION LEADER)</i>			
<b>WAYPOINT NAME/SEQUENCE</b>	<b>LATITUDE</b>	<b>LONGITUDE</b>	<b>APPROX DEPTH</b>	<b>WAYPOINT NAME/SEQUENCE</b>	<b>LATITUDE</b>	<b>LONGITUDE</b>	<b>APPROX DEPTH</b>
Launch	39.8691253	-69.2860415	1449	Launch			
WP1				WP1	39.869001356	-69.28703872	1468
WP2				WP2	39.8691253	-69.2860415	1449
WP3				WP3	39.869656693	-69.28336976	1366
WP4				WP4			
WP5				WP5			
Recovery				Recovery			

### ANCILLARY INFORMATION:

We plan on conducting multibeam mapping over this site before we dive to determine if we can confirm water column plume with the backscatter data.