



# NOAA Okeanos Explorer Program

## ROV Dive Planning Form

Please use this as a template for documenting your recommendations for high-priority dive targets. Be sure to include a rationale for the dive as well as specific protocols (if applicable), and any known previous work or potential hazards at the site. Please include only generalized location information for any marine archaeology sites.

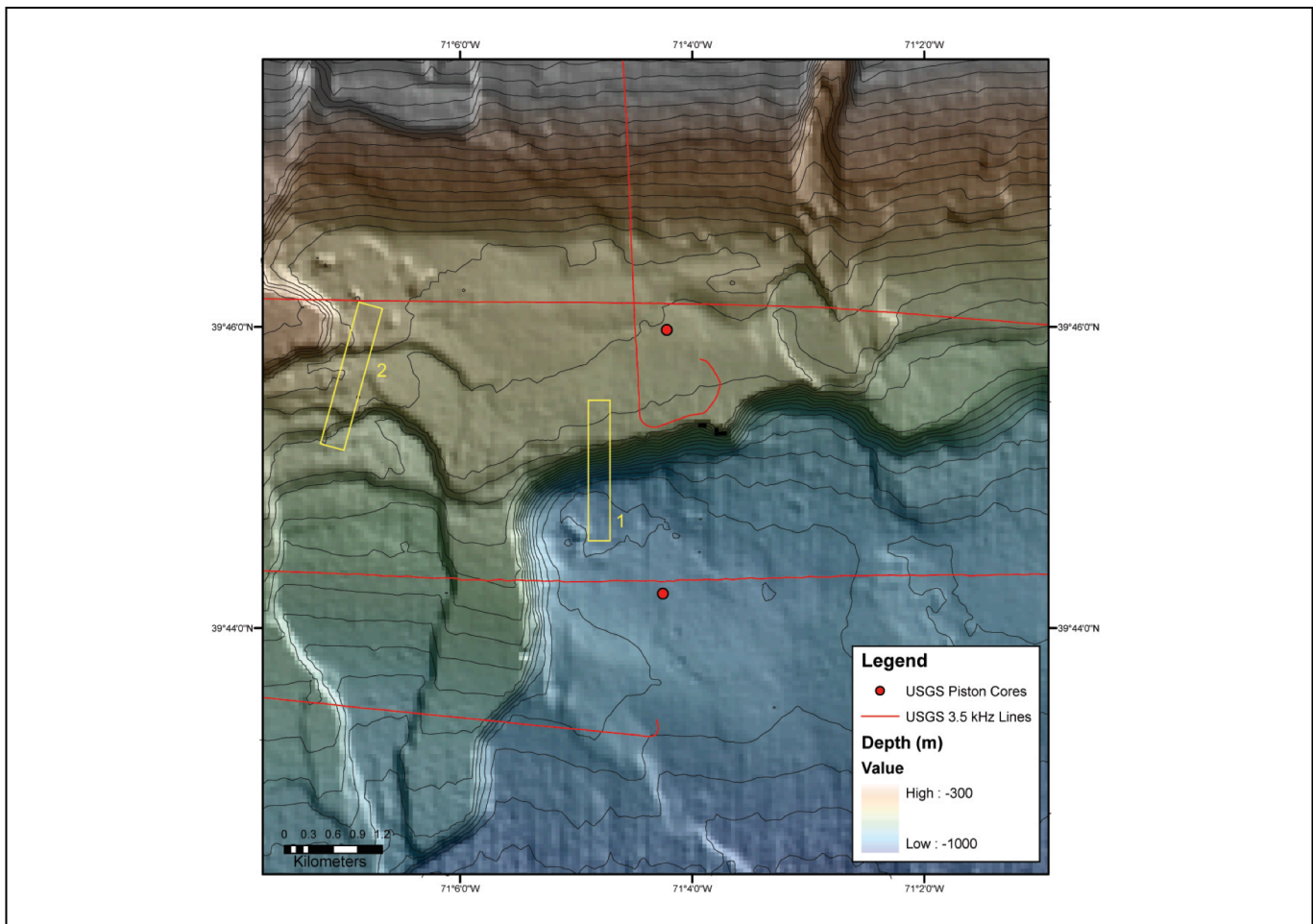
The form also includes fields for mapping targets and CTD cast locations as well.

Please send the completed form to [Kelley.Elliott@noaa.gov](mailto:Kelley.Elliott@noaa.gov) and [Brian.Kennedy@noaa.gov](mailto:Brian.Kennedy@noaa.gov).

**Site Name:** USGS-Hazards 3

**Approximate Location:** 39.74709, -71.074462

**Dive Date (local):** July 9, 2013



UPDATED: July 9, 2013



# NOAA *Okeanos Explorer* Program

## ROV Dive Planning Form

**Brief Explanation of Exploration Objectives and Rational for the Desired Dive Track:** The purpose of this proposed dive is to investigate headwall scarps of a large landslide scar on the lower continental slope. The scientific rationale for this site is: 1) to determine if these scarps are relatively young and if they pose a hazard in terms of tsunami generation; 2) evaluate the long term stability of landslide scarps and test hypotheses about their evolution, 3) attempt to develop a means of using biologic activity on the scarps and deposits as a means of determining relative ages of the features and the response of bottom communities to catastrophic events (Bob Carney, LSU has an interest in this also).

Two potential sites for the dive are shown on the attached map. The box 1 is preferred as it crosses the primary headwall (which is steep). The Box 2 transect is an alternate if the ROV group considers box 1 to be too dangerous/difficult.

**Has previous work been conducted here? Are there potential hazards in the area?** The proposed dive area has been extensively investigated by the USGS using multibeam bathymetry, multi-channel seismic reflection data, sub-bottom profiles and piston cores. No known hazards.

### ROV Track Waypoints Table:

<i>DESIRED WAYPOINTS TO EXPLORE - (COMPLETED BY SHORE-SIDE LEAD SCIENTIST) (not including launch)</i>				<i>ACTUAL WAYPOINTS TO EXPLORE - (COMPLETED BY SHIPBOARD EXPEDITION LEADER)</i>			
<b>WAYPOINT NAME/SEQUENCE</b>	<b>LATITUDE</b>	<b>LONGITUDE</b>	<b>APPROX DEPTH</b>	<b>WAYPOINT NAME/SEQUENCE</b>	<b>LATITUDE</b>	<b>LONGITUDE</b>	<b>APPROX DEPTH</b>
Launch				Launch			
WP1	39.74822872	-71.07495833	1877	WP1	39.74822872	-71.07495833	1877
WP2	39.75602481	-71.07553816	1603	WP2	39.75602481	-71.07553816	1603
WP3				WP3			
WP4				WP4			
WP5				WP5			
Recovery				Recovery			

### ANCILLARY INFORMATION:

We will conduct a CTD cast and collect water samples after this dive.



# NOAA *Okeanos Explorer* Program

## ROV Dive Planning Form

### DIVE PLAN OVERVIEW

The general dive plan is to start at the base and transit up slope.

