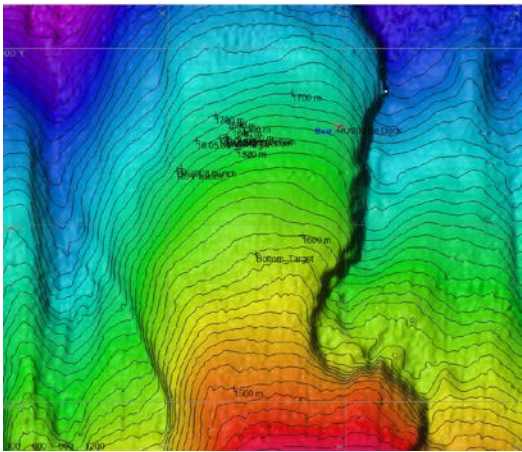


Scientists Involved <i>(please provide name / location / affiliation / email)</i>	Mike Cheadle	University of Wyoming	cheadle@uwyo.edu
	Mike Ford	NOAA Fisheries	michael.ford@noaa.gov
	Andrea Quanttrini	USGS	aquattrini@usgs.gov
	Christopher Kelley	University of Hawaii	ckelley@hawaii.edu

Purpose of the Dive
 The purpose of this engineering dive was to give ROV pilots time to train on the manipulators and to check white balance control had been restored to one of the Zeus Plus cameras that had failed during Dive 01.

Description of the Dive:
 ROV *Deep Discoverer* landed on a soft sedimented bottom at a depth of 1678 m. ROV pilots spent time training with the manipulator arms, practicing with the SeaPoke, weights with different handles, the temperature probe, and setting up a remote GoPro camera stand. During the dive fauna observed included a few holothurians, shrimp, and a few fish. About half way through the dive, the manipulator was able to bring a “handful” of sediment to the camera for close inspection.

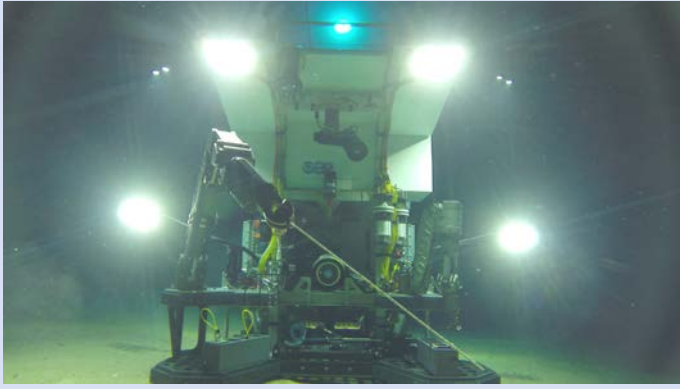
Overall Map of ROV Dive Area



Close-up Map of Main Dive Site



Representative Photos of the Dive



Please direct inquiries to:

NOAA Office of Ocean Exploration & Research
1315 East-West Highway (SSMC3 10th Floor)
Silver Spring, MD 20910
(301) 734-1014